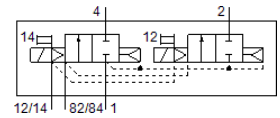
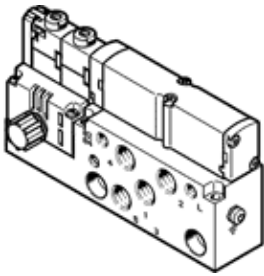


solenoid valve

VMPA14-M1H-D-S-G1/8-PI

Part number: 8023569

FESTO



Data sheet

Feature	Value
Valve function	2x2/2 closed, monostable
Type of actuation	electrical
Valve size	14 mm
Standard nominal flow rate	570 l/min
Operating pressure MPa	0.3 ... 1 MPa
Operating pressure	3 ... 10 bar
Design structure	Piston slide
Type of reset	Air spring
Authorisation	c UL us - Recognized (OL)
CE mark (see declaration of conformity)	to EU directive for EMC in accordance with EU RoHS directive
UKCA marking (see declaration of conformity)	To UK instructions for EMC To UK RoHS instructions
Protection class	IP65 to IEC 60529
Exhaust-air function	throttleable
Sealing principle	soft
Assembly position	Any
Manual override	detenting Pushing
Type of piloting	Piloted
Pilot air supply	external
Flow direction	non reversible
Overlap	Positive overlap
Signal status display	Yes
Pilot pressure MPa	0.3 ... 0.8 MPa
Pilot pressure	3 ... 8 bar
Suitability for vacuum	No
Standard nominal flow rate with QS-8	570 l/min
Switching time off	30 ms
Switching time on	12 ms
Max. positive test pulse with logic 0	400 µs
Max. negative test pulse with logic 1	200 µs
Permissible voltage fluctuation	+/- 25 %
Operating medium	Compressed air in accordance with ISO8573-1:2010 [7:4:4]
Note on operating and pilot medium	Lubricated operation possible (subsequently required for further operation)
Vibration resistance	Transport application test at severity level 2 in accordance with FN 942017-4 and EN 60068-2-6
Shock resistance	Shock test with severity level 2 in accordance with FN 942017-5 and EN 60068-2-27
Corrosion resistance classification CRC	1 - Low corrosion stress
PWIS conformity	VDMA24364-B1/B2-L
Storage temperature	-20 ... 40 °C
Medium temperature	-5 ... 50 °C
Relative air humidity	Max. 90% at 40°C

Feature	Value
Ambient temperature	-5 ... 50 °C
Max. tightening torque, valve mounting	0.65 Nm
Product weight	255 g
Electrical connection	4-pin M8x1 Plug to EN 60947-5-2
Mounting type	with through hole
Auxiliary pilot air port 12/14	M5
Pilot exhaust port 82/84	M5
Pneumatic connection, port 1	G1/8
Pneumatic connection, port 2	G1/8
Pneumatic connection, port 3	G1/8
Pneumatic connection, port 4	G1/8
Pneumatic connection, port 5	G1/8
Materials note	Conforms to RoHS
Material seals	NBR
Material housing	Aluminium die cast