

pressure regulator LR-1/2-D-7-MAXI-MPA

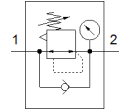
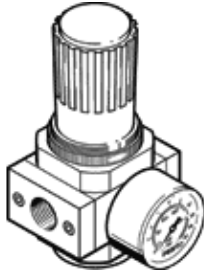
Part number: 8002371

Classic - do not use for new projects

With pressure gauge, working pressure up to 7 bar.

Modern alternatives can be found by entering the first four characters of the type code in the search field.

FESTO



Data sheet

Feature	Value
Size	Maxi
Series	D
Actuator lock	Rotary knob with lock
Assembly position	Any
Design structure	Piloted piston regulator
Controller function	Output pressure constant with secondary exhaust
Pressure gauge	with pressure gauge
Operating pressure	0 ... 16 bar
Pressure regulation range	0.5 ... 7 bar
Max. pressure hysteresis	0.4 bar
Standard nominal flow rate	10,700 l/min
Operating medium	Compressed air in accordance with ISO8573-1:2010 [7:4:4] Inert gases
Note on operating and pilot medium	Lubricated operation possible (subsequently required for further operation)
Corrosion resistance classification CRC	2 - Moderate corrosion stress
PWIS conformity	VDMA24364-B1/B2-L
Air purity class at output	Compressed air in accordance with ISO8573-1:2010 [7:4:4] Inert gases
Medium temperature	-10 ... 60 °C
Ambient temperature	-10 ... 60 °C
Product weight	1,200 g
Mounting type	Front panel installation Line installation with accessories
Pneumatic connection, port 1	G1/2
Pneumatic connection, port 2	G1/2
Materials note	Conforms to RoHS
Material of connecting plate	Zinc die-casting
Material seals	NBR
Material housing	Zinc die-casting