

# service unit

## FRC-1-D-5M-MAXI-A-MPA

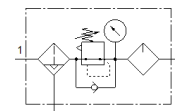
Part number: 8002367

Classic - do not use for new projects

FESTO

Filter/regulator/lubricator combination, 5 µm filter, with metal bowl guard. With automatic condensate drain.

Modern alternatives can be found by entering the first four characters of the type code in the search field.



### Data sheet

| Feature                                 | Value   |
|---|---|
| Size                                    | Maxi  |
| Series                                  | D   |
| Actuator lock                           | Rotary knob with lock   |
| Assembly position                       | Vertical +/- 5°   |
| Condensate drain                        | fully automatic   |
| Design structure                        | Filter regulator with pressure gauge<br>proportional standard mist lubricator |
| Max. condensate volume                  | 80 cm <sup>3</sup>  |
| Grade of filtration                     | 5 µm  |
| Bowl guard                              | Metal bowl guard  |
| Pressure gauge                          | with pressure gauge   |
| Operating pressure                      | 2 ... 12 bar  |
| Pressure regulation range               | 0.5 ... 12 bar  |
| Max. pressure hysteresis                | 0.4 bar   |
| Standard nominal flow rate              | 7,200 l/min   |
| Operating medium                        | Compressed air to ISO 8573-1:2010 [7:9:-]<br>Inert gases                      |
| Note on operating and pilot medium      | Lubricated operation possible (subsequently required for further operation)   |
| Corrosion resistance classification CRC | 2 - Moderate corrosion stress   |
| PWIS conformity                         | VDMA24364-B1/B2-L   |
| Air purity class at output              | Compressed air to ISO 8573-1:2010 [6:8:-]<br>Inert gases                      |
| Medium temperature                      | -10 ... 60 °C   |
| Ambient temperature                     | -10 ... 60 °C   |
| Product weight                          | 2,520 g   |
| Mounting type                           | Line installation<br>with accessories   |
| Pneumatic connection, port 1            | G1  |
| Pneumatic connection, port 2            | G1  |
| Materials note                          | Conforms to RoHS  |
| Material housing                        | Zinc die-casting  |
| Material bowl                           | PC  |