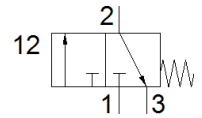
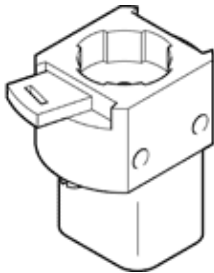


front panel valve SV-3-M5

Part number: 6817

FESTO

This type is suitable for vacuum. Vacuum connection at port 1 (P).



Data sheet

Feature	Value
Valve function	3/2 closed, monostable
Type of actuation	manual
Standard nominal flow rate	65 l/min
Operating pressure MPa	-0.095 ... 0.8 MPa
Operating pressure	-0.95 ... 8 bar
Design structure	Poppet valve with spring return
Type of reset	mechanical spring
Nominal size	2 mm
Sealing principle	soft
Assembly position	Any
Type of piloting	direct
Flow direction	non reversible
Overlap	Positive overlap
Operating medium	Compressed air in accordance with ISO8573-1:2010 [7:4:4]
PWIS conformity	VDMA24364-B1/B2-L
Ambient temperature	-10 ... 60 °C
Actuating force	12 N
Product weight	40 g
Mounting type	Front panel installation with through hole
Pneumatic connection, port 1	M5
Material seals	NBR
Material housing	Plastic Brass