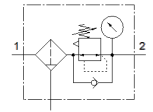
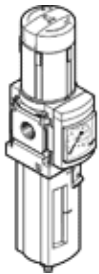


# filter regulator

## MS6-LFR-1/2-D7-C-R-M-A4-AS

Part number: 609974

FESTO



## Data sheet

| Feature                                 | Value   |
|---|---|
| Size                                    | 6   |
| Series                                  | MS  |
| Actuator lock                           | Rotary knob with lock<br>with accessories, lockable                           |
| Assembly position                       | Vertical +/- 5°   |
| Grade of filtration                     | 5 µm  |
| Condensate drain                        | manual rotary   |
| Design structure                        | Filter regulator with pressure gauge  |
| Max. condensate volume                  | 38 ml   |
| Controller function                     | Output pressure constant<br>with secondary exhaust                            |
| Bowl guard                              | Plastic guard   |
| Pressure gauge                          | Prepared for G1/4   |
| Operating pressure MPa                  | 0.08 ... 2 MPa  |
| Operating pressure                      | 0.8 ... 20 bar  |
| Pressure regulation range               | 0.5 ... 12 bar  |
| Max. pressure hysteresis (MPa)          | 0.025 MPa   |
| Max. pressure hysteresis                | 0.25 bar<br>3.625 psi   |
| Standard nominal flow rate              | 4,000 l/min   |
| Operating medium                        | Compressed air to ISO 8573-1:2010 [-:4:]<br>Inert gases                       |
| Corrosion resistance classification CRC | 2 - Moderate corrosion stress   |
| PWIS conformity                         | VDMA24364-B1/B2-L   |
| Storage temperature                     | -10 ... 60 °C   |
| Food-safe                               | See Supplementary material information  |
| Air purity class at output              | Compressed air in accordance with ISO8573-1:2010 [6:4:4]                      |
| Medium temperature                      | -10 ... 60 °C   |
| Ambient temperature                     | -10 ... 60 °C   |
| Product weight                          | 875 g   |
| Mounting type                           | Front panel installation<br>Line installation<br>with accessories<br>Optional |
| Pneumatic connection, port 1            | G1/2  |
| Pneumatic connection, port 2            | G1/2  |
| Materials note                          | Conforms to RoHS  |
| Material control panel                  | PA<br>POM   |
| Material seals                          | NBR   |
| Material filter                         | PE  |
| Material housing                        | Aluminium die cast  |
| Material membrane                       | NBR   |
| Material bowl                           | PC  |
| Material separating plate               | POM   |