

pneumatic valve

CJ-5/2-1/2

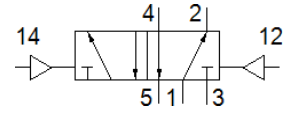
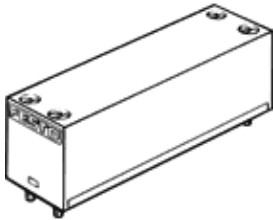
Part number: 5815

Classic - do not use for new projects

[Without sub-base](#)

Modern alternatives can be found by entering the first four characters of the type code in the search field.

FESTO



Data sheet

Feature	Value
Valve function	5/2 bistable
Operating pressure	1 ... 12 bar
Pilot pressure	2 ... 10 bar
PWIS conformity	VDMA24364 zone III
Pneumatic connection, port 1	G1/2
Pneumatic connection, port 2	G1/2
Pneumatic connection, port 3	G1/2
Pneumatic connection, port 4	G1/2
Pneumatic connection, port 5	G1/2