

solenoid valve

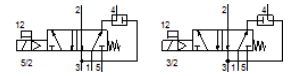
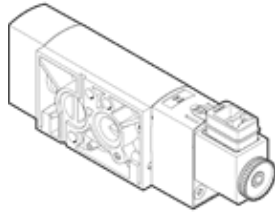
VSNC-FC-M52-MD-G14-F8-1B2

Part number: 577295

★ Core product range

NAMUR valve 1/4", monostable, F8 armature system, with coil.

FESTO



Data sheet

Feature	Value
Valve function	5/2 or 3/2, convertible
Type of actuation	electrical
Width	32 mm
Standard nominal flow rate	1,250 l/min
Operating pressure MPa	0.25 ... 1 MPa
Operating pressure	2.5 ... 10 bar
Design structure	Piston slide
Type of reset	mechanical spring
Authorisation	c UL us - Recognized (OL)
Certificate issuing department	DNVGL-TAA000011J
Protection class	IP65 IP67 with plug socket to IEC 60529
Exhaust-air function	throttleable
Sealing principle	soft
Assembly position	Any
Conforms to standard	VDI/VDE 3845 (NAMUR)
Manual override	detenting Pushing
Type of piloting	Piloted
Pilot air supply	Internal
Flow direction	non reversible
Overlap	Positive overlap
Signal status display	with accessories
b value	0.4
C value	5.2 l/sbar
Standard nominal flow rate, exhaust air return 4→3	110 l/min
Switching time off	48 ms
Switching time on	11 ms
Duty cycle	100 %
Characteristic coil data	24 V DC: 3.3 W
Permissible voltage fluctuation	+/- 10 %
Operating medium	Compressed air in accordance with ISO8573-1:2010 [7:4:4]
Note on operating and pilot medium	Lubricated operation possible (subsequently required for further operation)
Corrosion resistance classification CRC	2 - Moderate corrosion stress
PWIS conformity	VDMA24364-B2-L
Medium temperature	-20 ... 60 °C
Ambient temperature	-20 ... 60 °C
Product weight	380 g
Electrical connection	3-pin Plug pattern type B to EN 175301-803 Plug

Feature	Value
	To industry standard (11 mm)
Mounting type	with through hole
Scavenging orifice connection	Non-ducted
Pneumatic connection, port 1	G1/4
Pneumatic connection, port 2	NAMUR port pattern
Pneumatic connection, port 3	G1/4
Pneumatic connection, port 4	NAMUR port pattern
Pneumatic connection, port 5	G1/4
Materials note	Conforms to RoHS
Material seals	NBR
Material housing	Wrought Aluminium alloy
Material screws	Galvanised steel