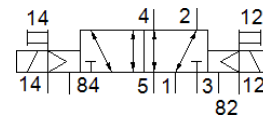


solenoid valve

VUVS-L20-B52-ZD-G18-F7-1C1

Part number: 575683

FESTO



Data sheet

| Feature | Value |
|---|--|
| Valve function | 5/2 bistable |
| Type of actuation | electrical |
| Valve size | 21 mm |
| Standard nominal flow rate | 700 l/min |
| Operating pressure MPa | -0.09 ... 1 MPa |
| Operating pressure | -0.9 ... 10 bar |
| Design structure | Piston slide |
| Authorisation | c UL us - Recognized (OL) |
| Protection class | IP65 with plug socket to IEC 60529 |
| Nominal size | 5.7 mm |
| Exhaust-air function | throttleable |
| Sealing principle | soft |
| Assembly position | Any |
| Manual override | detenting Pushing |
| Type of piloting | Piloted |
| Pilot air supply | external |
| Flow direction | reversible |
| Overlap | Positive overlap |
| Pilot pressure MPa | 0.15 ... 1 MPa |
| Pilot pressure | 1.5 ... 10 bar |
| b value | 0.35 |
| C value | 2.9 l/sbar |
| Switching time reversal | 10 ms |
| Duty cycle | 100 % |
| Max. positive test pulse with logic 0 | 1,900 µs |
| Max. negative test pulse with logic 1 | 2,700 µs |
| Characteristic coil data | 24 V DC: 2.6 W |
| Permissible voltage fluctuation | +/- 10 % |
| Operating medium | Compressed air in accordance with ISO8573-1:2010 [7:4:4] |
| Note on operating and pilot medium | Lubricated operation possible (subsequently required for further operation) |
| Vibration resistance | Transport application test at severity level 2 in accordance with FN 942017-4 and EN 60068-2-6 |
| Shock resistance | Shock test with severity level 2 in accordance with FN 942017-5 and EN 60068-2-27 |
| Corrosion resistance classification CRC | 2 - Moderate corrosion stress |
| PWIS conformity | VDMA24364-B1/B2-L |
| Medium temperature | -10 ... 60 °C |
| Pilot medium | Compressed air in accordance with ISO8573-1:2010 [7:4:4] |
| Ambient temperature | -10 ... 60 °C |
| Product weight | 259 g |
| Electrical connection | Plug pattern type C to EN 175301-803 to EN 175301-803 |

| Feature | Value |
|-------------------------------|---|
| Mounting type | on manifold rail with through hole Optional |
| Scavenging orifice connection | Non-ducted |
| Pilot exhaust port 82 | M5 |
| Pilot exhaust port 84 | M5 |
| Pilot air port 12 | M5 |
| Pilot air port 14 | M5 |
| Pneumatic connection, port 1 | G1/8 |
| Pneumatic connection, port 2 | G1/8 |
| Pneumatic connection, port 3 | G1/8 |
| Pneumatic connection, port 4 | G1/8 |
| Pneumatic connection, port 5 | G1/8 |
| Materials note | Conforms to RoHS |
| Material seals | HNBR NBR |
| Material housing | Aluminium die cast Painted |
| Material Piston slide | Wrought Aluminium alloy |
| Material screws | Galvanised steel |