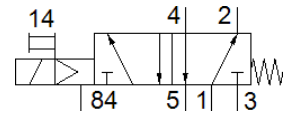
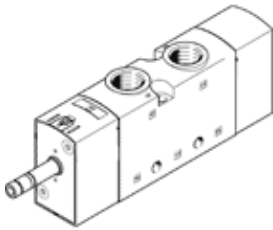


# solenoid valve

## VUVS-L30-M52-MD-N38-F8

Part number: 575647

FESTO



## Data sheet

Feature	Value
Valve function	5/2 monostable
Type of actuation	electrical
Valve size	31 mm
Standard nominal flow rate	2,300 l/min
Operating pressure MPa	0.25 ... 1 MPa
Operating pressure	2.5 ... 10 bar
Design structure	Piston slide
Type of reset	mechanical spring
Authorisation	c UL us - Recognized (OL)
Maritime classification	see certificate
Certificate issuing department	DNVGL-TAA000011J
Nominal size	9.4 mm
Exhaust-air function	throttleable
Sealing principle	soft
Assembly position	Any
Manual override	detenting Pushing
Type of piloting	Piloted
Pilot air supply	Internal
Flow direction	non reversible
Overlap	Positive overlap
b value	0.4
C value	9.9 l/sbar
Switching time off	62 ms
Switching time on	17 ms
Max. positive test pulse with logic 0	2,000 µs
Max. negative test pulse with logic 1	3,600 µs
Operating medium	Compressed air in accordance with ISO8573-1:2010 [7:4:4]
Note on operating and pilot medium	Lubricated operation possible (subsequently required for further operation)
Vibration resistance	Transport application test at severity level 2 in accordance with FN 942017-4 and EN 60068-2-6
Shock resistance	Shock test with severity level 2 in accordance with FN 942017-5 and EN 60068-2-27
Corrosion resistance classification CRC	2 - Moderate corrosion stress
Medium temperature	-10 ... 60 °C
Pilot medium	Compressed air in accordance with ISO8573-1:2010 [7:4:4]
Ambient temperature	-10 ... 60 °C
Product weight	450 g
Mounting type	on manifold rail with through hole Optional
Scavenging orifice connection	Non-ducted
Pilot exhaust port 82	10-32 UNF-2B
Pilot exhaust port 84	10-32 UNF-2B
Pneumatic connection, port 1	3/8 NPT

Feature	Value
Pneumatic connection, port 2	3/8 NPT
Pneumatic connection, port 3	3/8 NPT
Pneumatic connection, port 4	3/8 NPT
Pneumatic connection, port 5	3/8 NPT
Materials note	Conforms to RoHS
Material seals	HNBR NBR
Material housing	Aluminium die cast Painted
Material Piston slide	Wrought Aluminium alloy
Material screws	Steel, nickel-plated