

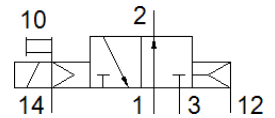
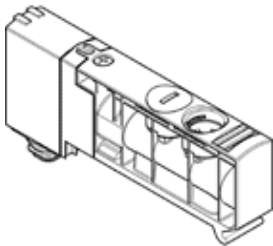
# solenoid valve

## VUVB-S-M32U-AZD-QX-1T1L

Part number: 574002

FESTO

This type is suitable for vacuum.



## Data sheet

| Feature                                 | Value                                                                       |
|-----------------------------------------|-----------------------------------------------------------------------------|
| Valve function                          | 3/2 open, monostable                                                        |
| Type of actuation                       | electrical                                                                  |
| Valve size                              | 20 mm                                                                       |
| Standard nominal flow rate              | 1,000 l/min                                                                 |
| Operating pressure                      | -0.9 ... 8 bar                                                              |
| Design structure                        | Piston slide                                                                |
| Type of reset                           | Air spring                                                                  |
| Protection class                        | IP65                                                                        |
| Nominal size                            | 7 mm                                                                        |
| Exhaust-air function                    | not throttleable                                                            |
| Sealing principle                       | soft                                                                        |
| Assembly position                       | Any                                                                         |
| Manual override                         | detenting<br>Pushing                                                        |
| Type of piloting                        | Piloted                                                                     |
| Pilot air supply                        | external                                                                    |
| Flow direction                          | non reversible                                                              |
| Pilot pressure                          | 2 ... 8 bar                                                                 |
| Switching time off                      | 20 ms                                                                       |
| Switching time on                       | 20 ms                                                                       |
| Characteristic coil data                | 24 V DC: 1.5 W                                                              |
| Surge strength                          | 0.8 kV                                                                      |
| Degree of contamination                 | 3                                                                           |
| Permissible voltage fluctuation         | +/- 10 %                                                                    |
| Operating medium                        | Compressed air in accordance with ISO8573-1:2010 [7:4:4]                    |
| Note on operating and pilot medium      | Lubricated operation possible (subsequently required for further operation) |
| CE mark (see declaration of conformity) | to EU directive for EMC                                                     |
| Corrosion resistance classification CRC | 1                                                                           |
| Storage temperature                     | -20 ... 40 °C                                                               |
| Medium temperature                      | -5 ... 50 °C                                                                |
| Ambient temperature                     | -5 ... 50 °C                                                                |
| Max. tightening torque, valve mounting  | 2 Nm                                                                        |
| Product weight                          | 150 g                                                                       |
| Electrical connection                   | Socket for multi-pin plug                                                   |
| Mounting type                           | with through hole                                                           |
| Auxiliary pilot air port 12/14          | Sub-base                                                                    |
| Pilot exhaust port 84                   | Non-ducted                                                                  |
| Pneumatic connection, port 1            | Sub-base                                                                    |
| Pneumatic connection, port 2            | For 18 mm cartridge                                                         |
| Pneumatic connection, port 3            | Sub-base                                                                    |
| Materials note                          | Free of copper and PTFE<br>Conforms to RoHS                                 |
| Materials information for seals         | FPM<br>HNBR<br>NBR                                                          |
| Materials information, housing          | PA-reinforced                                                               |
| Material information, piston spool      | Wrought Aluminium alloy                                                     |