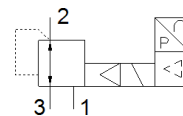
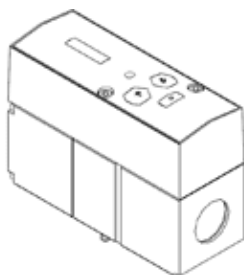


proportional pressure regulator VPPM-8TA-L-1-F-0L10H-S1C1

Part number: 572409

FESTO



Data sheet

Feature	Value
Nominal diameter, pressurisation	8 mm
Nominal diameter, exhaust	7 mm
Type of actuation	electrical
Sealing principle	soft
Assembly position	Any
Design structure	Pilot actuated diaphragm regulator
Short circuit strength	for all electrical connections
Safety instructions	VPPM safety position: If the power supply cable is interrupted, output pressure is maintained unregulated.
Polarity protected	for all electrical connections
Type of reset	mechanical spring
Type of piloting	Piloted
Valve function	3-way proportional-pressure regulator
Type of display	Backlit LCD
Pressure regulation range MPa	0.01 ... 1 MPa
Pressure regulation range	0.1 ... 10 bar
Inlet pressure 1	0 ... 11 bar
Supply pressure 1 MPa	0 ... 1.1 MPa
Max. pressure hysteresis	0.05 bar
Standard nominal flow rate	1,650 l/min
Operating voltage range DC	21.6 ... 26.4 V
Max. current consumption	300 mA
Duty cycle	100 %
Max. electrical power consumption	7 W
Residual ripple	10 %
Operating medium	Compressed air in accordance with ISO8573-1:2010 [7:4:4] Inert gases
Note on operating and pilot medium	Lubricated operation not possible
Authorisation	RCM Mark c UL us - Listed (OL)
KC mark	KC-EMV
CE mark (see declaration of conformity)	to EU directive for EMC in accordance with EU RoHS directive
UKCA marking (see declaration of conformity)	To UK instructions for EMC To UK RoHS instructions
Certificate issuing department	UL E322346
Corrosion resistance classification CRC	2 - Moderate corrosion stress
PWIS conformity	VDMA24364-B1/B2-L
Medium temperature	10 ... 50 °C
Protection class	IP65
Ambient temperature	0 ... 50 °C
Product weight	560 g
Linearity	1 %FS
Hysteresis	0.5 %FS
Reproducibility	0.5 %FS
Overall accuracy	1,25 %FS

Feature	Value
Temperature coefficient	0.04 %/K
FS repetition accuracy	0.5 %
Electrical connection	via manifold block
Mounting type	with through hole with accessories Optional
Pneumatic connection, port 1	Sub-base
Pneumatic connection, port 2	Sub-base
Pneumatic connection, port 3	Sub-base
Materials note	Conforms to RoHS
Material housing	Wrought Aluminium alloy Anodised