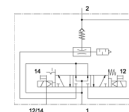
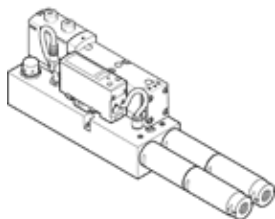


vacuum block

VABF-S4-1-V2B1-C-VH-20

Part number: 571425

FESTO



Data sheet

Feature	Value
Nominal size, Laval nozzle	2 mm
Design, silencer	open
Polarity protected	for all electrical connections
Assembly position	Any
Ejector characteristic	High vacuum Standard
Manual override	detenting Pushing Covered
Integrated function	Ejector pulse valve, electrical Flow control valve Electrical on-off valve Air saving function, electrical Non-return valve Open silencer Vacuum switch
Design structure	not modular
Short circuit strength	Yes
Measured variable	Relative pressure
Measuring principle	Piezoresistive
Switching function	Threshold value comparator
Valve function	5/3 pressurised
Switching element function	Normally open contact
Hysteresis adjustment range [bar]	-0.9 ... 0 bar
Threshold setting range	-0.999 ... 0 bar
Operating pressure	4 ... 8 bar
Nominal operating pressure	6 bar
Operating voltage range DC	21.6 ... 26.4 V
Inductive protective circuit	Adapted to MZ-, MY-, ME coils
Idle current	50 ... 150 mA
Max. output current	50 mA
Duty cycle	100 %
Voltage drop	≤ 1.5 V
Characteristic coil data	24 V DC: 1.3 W
Overload withstand capability	Available
Operating medium	Compressed air in accordance with ISO8573-1:2010 [7:4:4]
Note on operating and pilot medium	Lubricated operation not possible
Corrosion resistance classification CRC	0 - No corrosion stress
PWIS conformity	VDMA24364 zone III
Medium temperature	0 ... 50 °C
Sound pressure level	78 dB(A)
Protection class	IP65
Ambient temperature	0 ... 50 °C
Product weight	1,120 g
Pressure measuring range	-1 ... 0 bar
Accuracy, FS	3 %FS

Feature	Value
Mounting type	On sub-base
Pneumatic connection, port 1	Manifold block, size 26 mm acc. to ISO 15407-2
Pneumatic connection, port 3	Manifold block, size 26 mm acc. to ISO 15407-2
Materials note	Conforms to RoHS
Material seals	NBR
Material housing	Wrought Aluminium alloy
Material screws	Steel Galvanised
Material connector housing	Zinc die-casting Nickel plated
Material electrical contact	Brass Gold plated
Material screen	PA
Material keypad	TPE-U