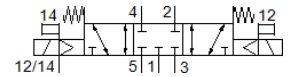


solenoid valve

VSVA-B-P53C-ZD-D2-1R5L

Part number: 567007

FESTO



Data sheet

Feature	Value
Valve function	5/3 closed
Type of actuation	electrical
Width	52 mm
Standard nominal flow rate	2,700 l/min
Operating pressure MPa	-0.09 ... 1.6 MPa
Operating pressure	-0.9 ... 16 bar
Design structure	Piston slide
Authorisation	C-Tick c CSA us (OL) c UL us - Recognized (OL)
KC mark	KC-EMV
CE mark (see declaration of conformity)	to EU directive for EMC
UKCA marking (see declaration of conformity)	To UK instructions for EMC To UK RoHS instructions
Protection class	IP65 NEMA 4
Nominal size	15 mm
Grid dimension	59 mm
Exhaust-air function	throttleable Via throttle plate Via individual sub-base
Sealing principle	soft
Assembly position	Any
Conforms to standard	ISO 5599-1
Manual override	detenting Pushing
Type of piloting	Piloted
Pilot air supply	external
Flow direction	Any
Overlap	Positive overlap
Signal status display	LED
Pilot pressure MPa	0.3 ... 1 MPa
Pilot pressure	3 ... 10 bar
Flow rate of valve	3,600 l/min
Flow rate of valve on individual sub-base	2,300 l/min
Flow rate of pneumatically linked valve	2,700 l/min
Switching time off	60 ms
Switching time on	23 ms
Duty cycle	100 %
Max. positive test pulse with logic 0	1,000 µs
Max. negative test pulse with logic 1	3,500 µs
Nominal breakaway current per solenoid coil	165 mA up to 30 ms
Nominal current with current reduction	35 mA after 30 ms
Characteristic coil data	24 V DC: 4.6 W
Permissible voltage fluctuation	+/- 10 %
Operating medium	Compressed air in accordance with ISO8573-1:2010 [7:4:4]

Feature	Value
Note on operating and pilot medium	Lubricated operation possible (subsequently required for further operation)
Vibration resistance	Transport application test at severity level 2 in accordance with FN 942017-4 and EN 60068-2-6
Shock resistance	Shock test with severity level 2 in accordance with FN 942017-5 and EN 60068-2-27
Corrosion resistance classification CRC	0 - No corrosion stress
PWIS conformity	VDMA24364-B1/B2-L
Medium temperature	-5 ... 50 °C
Relative air humidity	0 - 90 %
Pilot medium	Compressed air in accordance with ISO8573-1:2010 [7:4:4]
Ambient temperature	-5 ... 50 °C
Product weight	780 g
Electrical connection	3-pin M12x1 Central plug Round design
Mounting type	On sub-base
Auxiliary pilot air port 12/14	Connection plate size 2 as per ISO 5599-1
Pilot exhaust port 82/84	Optional Not ducted as per standard Ducted
Pneumatic connection, port 1	Connection plate size 2 as per ISO 5599-1
Pneumatic connection, port 2	Connection plate size 2 as per ISO 5599-1
Pneumatic connection, port 3	Connection plate size 2 as per ISO 5599-1
Pneumatic connection, port 4	Connection plate size 2 as per ISO 5599-1
Pneumatic connection, port 5	Connection plate size 2 as per ISO 5599-1
Materials note	Conforms to RoHS
Material seals	FPM HNBR NBR
Material housing	Aluminium die cast PA
Material screws	Steel Galvanised