

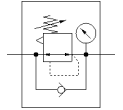
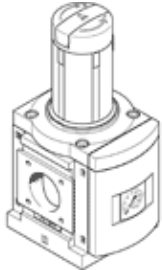
pressure regulator

MS9-LR-NG-D5-DI-AG-PSI-AS

Part number: 564140

FESTO

4 bar maximum output pressure, with pressure gauge, lockable regulator head, direction of flow: from left to right.



Data sheet

| Feature | Value |
|---|--|
| Size | 9 |
| Series | MS |
| Actuator lock | Rotary knob with lock with accessories, lockable |
| Assembly position | Any |
| Design structure | directly-controlled diaphragm regulator |
| Controller function | Output pressure constant with initial pressure compensation with secondary exhaust with return flow |
| Pressure gauge | with pressure gauge |
| Operating pressure | 1 ... 20 bar |
| Pressure regulation range | 0.5 ... 4 bar |
| Max. pressure hysteresis | 0.4 bar |
| Explosion-proof ambient temperature | -10°C ≤ Ta ≤ +60°C |
| Operating medium | Compressed air in accordance with ISO8573-1:2010 [7:4:4] Inert gases |
| Note on operating and pilot medium | Lubricated operation possible (subsequently required for further operation) |
| Corrosion resistance classification CRC | 2 - Moderate corrosion stress |
| PWIS conformity | VDMA24364-B1/B2-L |
| Storage temperature | -10 ... 60 °C |
| Medium temperature | -10 ... 60 °C |
| Ambient temperature | -10 ... 60 °C |
| Product weight | 1,400 g |
| Mounting type | Front panel installation Line installation with accessories Optional |
| Material of cover | PA-reinforced |
| Materials note | Conforms to RoHS |
| Material of connecting plate | Aluminium die cast |
| Material mounting bracket | Aluminium die cast |
| Material housing | Aluminium die cast |
| Material module connector | Aluminium die cast |
| Material membrane | NBR |
| Material valve stem | Wrought Aluminium alloy NBR POM |