

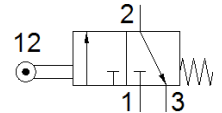
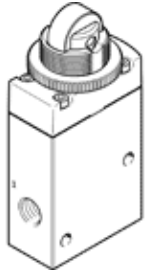
roller actuated valve VMEM-DT-M32C-M-G18

Part number: 563386
Product to be discontinued

FESTO

This type is suitable for vacuum.

Type to be discontinued. Available until 2019. See Support Portal for alternative products.



Data sheet

Feature	Value
Valve function	3/2 closed, monostable
Type of actuation	mechanical
Width	20 mm
Standard nominal flow rate	500 l/min
Operating pressure	-0.95 ... 8 bar
Design structure	Poppet seat
Type of reset	mechanical spring
Nominal size	4 mm
Instructions for use	Do not use as mechanical stop
Type of piloting	direct
Max. actuating speed for axial actuation	0.6 m/s
Max. actuating speed for side actuation	0.2 m/s
Max. switching frequency	2 Hz
Operating medium	Compressed air in accordance with ISO8573-1:2010 [7:::]
Note on operating and pilot medium	Lubricated operation possible (subsequently required for further operation)
Corrosion resistance classification CRC	2 - Moderate corrosion stress
Medium temperature	-10 ... 60 °C
Ambient temperature	-10 ... 60 °C
Actuating force	90 N
Max. force on actuator	80 N
Max. transverse force on actuator	30 N
Product weight	160 g
Mounting type	Optional Front panel installation with through hole
Pneumatic connection, port 1	G1/8
Pneumatic connection, port 2	G1/8
Pneumatic connection, port 3	G1/8
Materials note	Conforms to RoHS
Material cover	PA
Material seals	NBR
Material housing	Wrought Aluminium alloy Anodised