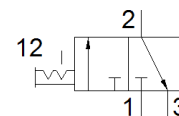


# on-off valve MS9-EM-G-S-VS

Part number: 562952

FESTO

Manual, with silencer, direction of flow: from left to right.



## Data sheet

Feature	Value
Series	MS
Size	9
Grid dimension	90 mm
Design structure	Piston slide
Type of actuation	manual
Sealing principle	soft
Exhaust-air function	not throttleable
Actuator lock	Rotary knob with lock
Type of reset	Forced guidance
Type of piloting	direct
Valve function	3/2 bistable
Operating pressure	0 ... 20 bar
Standard nominal flow rate	18,000 l/min
Standard nominal flow rate 2-3	14,100 l/min
Operating medium	Compressed air in accordance with ISO8573-1:2010 [7:4:4]
Note on operating and pilot medium	Lubricated operation possible (subsequently required for further operation)
Corrosion resistance classification CRC	2 - Moderate corrosion stress
Materials note	Conforms to RoHS
PWIS conformity	VDMA24364-B1/B2-L
Medium temperature	-10 ... 60 °C
Sound pressure level	93 dB(A)
Ambient temperature	-10 ... 60 °C
Mounting type	Line installation with accessories Optional
Assembly position	Any
Product weight	2,400 g
Pneumatic connection, port 3	G1
Material Piston slide	POM
Material seals	NBR
Material housing	Aluminium die cast