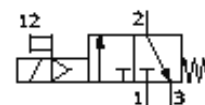


# On-off valve MS9-EE-G-V24-VS

Part number: 562939

FESTO



## Data sheet

Feature	Value
Series	MS
Size	9
Grid dimension	90 mm
Design structure	Piston slide
Type of actuation	electrical
Sealing principle	soft
Exhaust-air function	not throttleable
Manual override	detenting Pushing
Type of reset	mechanical spring
Type of piloting	Piloted
Valve function	3/2 closed, monostable
Operating pressure	3.5 ... 16 bar
Standard nominal flow rate	18,000 l/min
Standard nominal flow rate 2-3	14,100 l/min
Duty cycle	100%
Characteristic coil data	24V DC: 4,5W
Operating medium	filtered compressed air, grade of filtration 40 µm, lubricated or unlubricated
Corrosion resistance classification CRC	2
Materials note	Conforms to RoHS
Medium temperature	-10 ... 60 °C
Protection class	IP65
Ambient temperature	-10 ... 60 °C
Mounting type	Optional with accessories Line installation
Assembly position	Any
Product weight	2,100 g
Pneumatic connection, port 3	G1
Electrical connection	Plug Cubic design Per DIN EN 175301-803 Design A
Material information, piston spool	POM
Materials information for seals	NBR
Materials information, housing	Aluminium die cast