

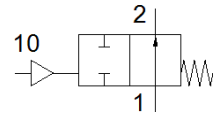
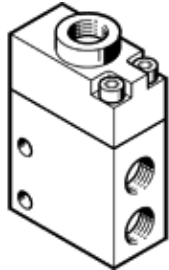
pneumatic valve

VLO-2-1/4

Part number: 561599
Product to be discontinued

FESTO

Type to be discontinued. Available until 2018. See Support Portal for alternative products.



Data sheet

Feature	Value
Valve function	2/2 open, monostable
Type of actuation	pneumatic
Width	25 mm
Standard nominal flow rate	600 l/min
Operating pressure	0 ... 10 bar
Design structure	Poppet seat
Type of reset	mechanical spring
Nominal size	7 mm
Assembly position	Any
Pilot pressure	1.2 ... 5 bar
Switching time off	17 ms
Switching time on	10 ms
Operating medium	Compressed air in accordance with ISO8573-1:2010 [7:4:4]
Note on operating and pilot medium	Lubricated operation possible (subsequently required for further operation)
Corrosion resistance classification CRC	2 - Moderate corrosion stress
Medium temperature	-10 ... 60 °C
Ambient temperature	-10 ... 60 °C
Product weight	275 g
Mounting type	with through hole
Pilot air port 12	G1/4
Pneumatic connection, port 1	G1/4
Pneumatic connection, port 2	G1/4
Materials information for seals	NBR
Materials information, housing	Aluminium Anodised