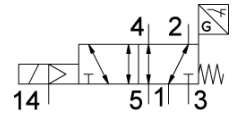
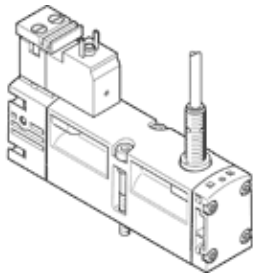


# solenoid valve

## VSVA-B-M52-MZ-A1-1C1-APC

Part number: 560725

FESTO



## Data sheet

Feature	Value
Valve function	5/2 monostable
Type of actuation	electrical
Width	26 mm
Standard nominal flow rate	1,100 l/min
Operating pressure MPa	-0.09 ... 1.6 MPa
Operating pressure	-0.9 ... 16 bar
Design structure	Piston slide
Type of reset	mechanical spring
Authorisation	C-Tick c UL us - Recognized (OL)
KC mark	KC-EMV
CE mark (see declaration of conformity)	to EU directive for EMC
Certificate issuing department	UL MH19482
UKCA marking (see declaration of conformity)	To UK instructions for EMC
Protection class	IP65 NEMA 4
Nominal size	9 mm
Exhaust-air function	throttleable Via throttle plate Via individual sub-base
Sealing principle	soft
Assembly position	Any
Conforms to standard	ISO 15407-1 VDMA 24563
Manual override	Covered
Type of piloting	Piloted
Pilot air supply	external
Flow direction	Any
Measuring principle	Inductive
Overlap	Positive overlap
Reverse polarity protection sensor	For all electrical connections
Signal status display	with accessories
Switching position sensing	Normal position with sensor
Switching status display sensor	LED
Pilot pressure MPa	0.3 ... 1 MPa
Pilot pressure	3 ... 10 bar
Flow rate of valve	1,400 l/min
Flow rate of valve on individual sub-base	1,100 l/min
Flow rate of pneumatically linked valve	1,100 l/min
Switching time off	41 ms
Switching time on	21 ms
Valve - sensor switching time on	60 ms
Valve - sensor switching time off	11 ms
Duty cycle	100 %
Max. positive test pulse with logic 0	1,800 µs
Max. negative test pulse with logic 1	800 µs

<b>Feature</b>	<b>Value</b>
Nominal operating voltage DC	24 V
Switch output	PNP
Characteristic coil data	24 V DC: 1.8 W
Permissible voltage fluctuation	-15 % / +10 %
Operating medium	Compressed air in accordance with ISO8573-1:2010 [7:4:4]
Note on operating and pilot medium	Lubricated operation possible (subsequently required for further operation)
Vibration resistance	Transport application test at severity level 2 in accordance with FN 942017-4 and EN 60068-2-6
Shock resistance	Shock test with severity level 2 in accordance with FN 942017-5 and EN 60068-2-27
Corrosion resistance classification CRC	0 - No corrosion stress
PWIS conformity	VDMA24364-B1/B2-L
Medium temperature	-5 ... 50 °C
Relative air humidity	0 - 90 %
Sound pressure level	85 dB(A)
Ambient temperature	-5 ... 50 °C
Max. tightening torque, valve mounting	1.8 ... 2.2 Nm
Product weight	332 g
Operating voltage range, DC sensor	10 ... 30 V
Short-circuit strength sensor	Pulsing
Idle current sensor	≤ 10 mA
Max. output current sensor	200 mA
Max. switching frequency sensor	5,000 Hz
Residual ripple sensor	± 10 %
Voltage drop sensor	≤ 2 V
Electrical connection	Plug pattern type C to EN 175301-803 to EN 175301-803 Without mains earth
Sensor connection	Cable 2,5 m
Mounting type	On sub-base
Auxiliary pilot air port 12/14	Connection plate size 26 mm, according to ISO 15407-1
Pilot exhaust port 82/84	Optional Ducted Non-ducted
Pneumatic connection, port 1	Connection plate size 26 mm, according to ISO 15407-1
Pneumatic connection, port 2	Connection plate size 26 mm, according to ISO 15407-1
Pneumatic connection, port 3	Connection plate size 26 mm, according to ISO 15407-1
Pneumatic connection, port 4	Connection plate size 26 mm, according to ISO 15407-1
Pneumatic connection, port 5	Connection plate size 26 mm, according to ISO 15407-1
Pilot interface	According to ISO 15218
Materials note	Conforms to RoHS
Material seals	FPM NBR
Material housing	Aluminium die cast PA
Material screws	Galvanised steel
Switching element function	Normally closed contact