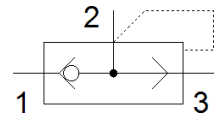
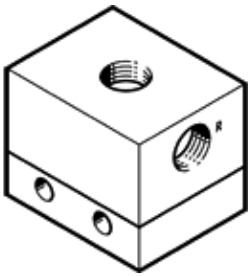


quick exhaust valve SE-1/4

Part number: 552431

FESTO



Data sheet

Feature	Value
Valve function	Quick exhaust
Pneumatic connection, port 1	G1/4
Pneumatic connection, port 2	G1/4
Mounting type	with through hole
Standard nominal flow rate, exhaust 0.6-0.5 MPa (6-5 bar, 87-72.5 psi)	1,700 l/min
Standard nominal flow rate pressurisation 0.6-0.5 MPa (6-5 bar, 87-72.5 psi)	950 l/min
Operating pressure	0.5 ... 10 bar
Ambient temperature	-20 ... 75 °C
Material housing	Wrought Aluminium alloy Anodised
Operating medium	Compressed air in accordance with ISO8573-1:2010 [7:-:-]
Nominal size	8 mm
Assembly position	Any
Note on operating and pilot medium	Lubricated operation possible (subsequently required for further operation)
Corrosion resistance classification CRC	2 - Moderate corrosion stress
PWIS conformity	VDMA24364-B1/B2-L
Medium temperature	-20 ... 75 °C
Product weight	250 g
Pneumatic connection, port 3	G1/4
Material seals	NBR