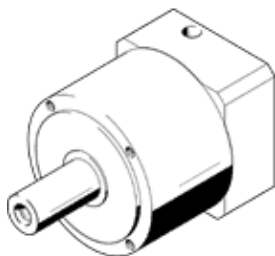


gear unit EMGA-160-P-G3-SAS-140

Part number: 552200

FESTO

Suitable for servo motors.



Data sheet

Feature	Value
Gear unit flange size	160 mm
Motor flange size	140 mm
Torsional backlash	0.1 deg
Type of gear unit	Planetary gear unit
Gear unit ratio	3:1
Max. input speed	6,500 1/min
Operating temperature of gear unit	-25 ... 90 °C
PWIS conformity	VDMA24364-B2-L
Protection class	IP54
Continuous output torque	400 Nm
Mass moment of inertia of gear unit	12.14 kgcm ²
Max. output torque	640 Nm
Max. efficiency	98 %
Torsional resistance	38 Nm/arcmin
Product weight	18,000 g
Gear unit interface, output shaft	160G
Gear unit interface, drive shaft	140A
Materials note	Conforms to RoHS