

# basic valve

## CPE18-P1-5JS-1/4

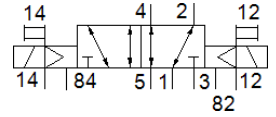
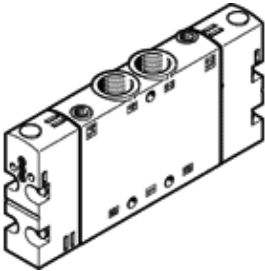
Part number: 550156  
Classic - do not use for new projects

FESTO

Very compact assembly, with CNOMO interface.

This type is suitable for vacuum. Manifold assembly is only possible with 5/2 and 5/3 way valves CPE10/14/18, please do not combine with 3/2 way valves.

Modern alternatives can be found by entering the first four characters of the type code in the search field.



## Data sheet

| Feature                                      | Value  |
|--|--|
| Valve function                               | 5/2 bistable   |
| Type of actuation                            | Via pilot interface to ISO 15218   |
| Width  | 18 mm  |
| Standard nominal flow rate                   | 1,500 l/min  |
| Operating pressure MPa                       | -0.09 ... 1 MPa  |
| Operating pressure                           | -0.9 ... 10 bar  |
| Design structure                             | Piston slide   |
| Maritime classification                      | see certificate  |
| CE mark (see declaration of conformity)      | to EU directive low-voltage devices  |
| UKCA marking (see declaration of conformity) | To UK instructions for electrical equipment  |
| Nominal size                                 | 8 mm   |
| Exhaust-air function                         | throttleable   |
| Sealing principle                            | soft   |
| Assembly position                            | Any  |
| Manual override                              | Pushing  |
| Type of piloting                             | Piloted  |
| Pilot air supply                             | external   |
| Flow direction                               | reversible   |
| Valve position identification                | Inscription label holder   |
| Overlap                                      | Positive overlap   |
| Pilot pressure MPa                           | 0.2 ... 1 MPa  |
| Pilot pressure                               | 2 ... 10 bar   |
| Switching time reversal                      | 15 ms  |
| Duty cycle                                   | 100 %  |
| Max. positive test pulse with logic 0        | 3,300 µs   |
| Max. negative test pulse with logic 1        | 3,100 µs   |
| Permissible voltage fluctuation              | -15 % / +10 %  |
| Operating medium                             | Compressed air in accordance with ISO8573-1:2010 [7:4:4]                                       |
| Note on operating and pilot medium           | Lubricated operation possible (subsequently required for further operation)                    |
| Vibration resistance                         | Transport application test at severity level 2 in accordance with FN 942017-4 and EN 60068-2-6 |
| Shock resistance                             | Shock test with severity level 2 in accordance with FN 942017-5 and EN 60068-2-27              |
| Corrosion resistance classification CRC      | 2 - Moderate corrosion stress  |
| PWIS conformity                              | VDMA24364-B1/B2-L  |
| Medium temperature                           | -5 ... 50 °C   |
| Pilot medium                                 | Compressed air in accordance with ISO8573-1:2010 [7:4:4]                                       |
| Ambient temperature                          | -5 ... 50 °C   |
| Product weight                               | 190 g  |

| Feature                      | Value              |
|------------------------------|--------------------|
| Mounting type                | with through hole  |
| Pilot exhaust port 82        | M5                 |
| Pilot exhaust port 84        | M5                 |
| Pilot air port 12            | M5                 |
| Pilot air port 14            | M5                 |
| Pneumatic connection, port 1 | G1/4               |
| Pneumatic connection, port 2 | G1/4               |
| Pneumatic connection, port 3 | G1/4               |
| Pneumatic connection, port 4 | G1/4               |
| Pneumatic connection, port 5 | G1/4               |
| Materials note               | Conforms to RoHS   |
| Material seals               | NBR                |
| Material housing             | Aluminium die cast |