

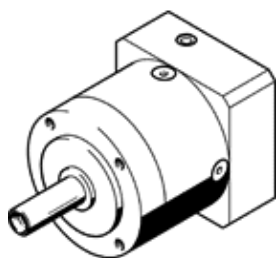
# gear unit EMGA-60-P-G5-SST-57

Part number: 549431

★ Core product range

Suitable for stepper motors.

FESTO



## Data sheet

Feature	Value
Gear unit flange size	60 mm
Motor flange size	57 mm
Torsional backlash	0.17 deg
Type of gear unit	Planetary gear unit
Gear unit ratio	5:1
Max. input speed	13,000 1/min
Operating temperature of gear unit	-25 ... 90 °C
PWIS conformity	VDMA24364-B2-L
Protection class	IP54
Continuous output torque	22 Nm
Mass moment of inertia of gear unit	0.078 kgcm <sup>2</sup>
Max. output torque	35.2 Nm
Max. efficiency	98 %
Torsional resistance	2.3 Nm/arcmin
Product weight	900 g
Gear unit interface, output shaft	60G
Gear unit interface, drive shaft	57A
Materials note	Conforms to RoHS