

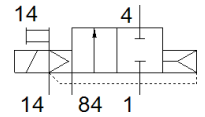
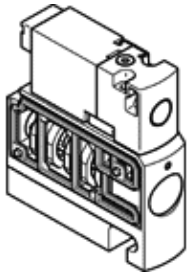
# solenoid valve

## CPVSC1-M5H-D-H-Q3C

Part number: 547384

FESTO

For valve terminal CPV-SC, QS push-in connector.  
This type is suitable for vacuum.



## Data sheet

| Feature                                 | Value  |
|---|--|
| Valve function                          | 2/2 closed, monostable   |
| Type of actuation                       | electrical   |
| Valve size                              | 10 mm  |
| Standard nominal flow rate              | 150 l/min  |
| Operating pressure MPa                  | -0.09 ... 0.7 MPa  |
| Operating pressure                      | -0.9 ... 7 bar   |
| Design structure                        | Piston slide   |
| Type of reset                           | Air spring   |
| Authorisation                           | c UL us - Recognized (OL)  |
| Protection class                        | IP40   |
| Exhaust-air function                    | not throttleable   |
| Sealing principle                       | soft   |
| Assembly position                       | Any  |
| Manual override                         | Pushing  |
| Type of piloting                        | Piloted  |
| Pilot air supply                        | external   |
| Flow direction                          | non reversible   |
| Overlap                                 | Positive overlap   |
| Pilot pressure MPa                      | 0.3 ... 0.7 MPa  |
| Pilot pressure                          | 3 ... 7 bar  |
| Switching time off                      | 10 ms  |
| Switching time on                       | 10 ms  |
| Max. positive test pulse with logic 0   | 500 µs   |
| Max. negative test pulse with logic 1   | 400 µs   |
| Characteristic coil data                | 12 V DC: 1 W   |
| Operating medium                        | Compressed air in accordance with ISO8573-1:2010 [7:4:4]                                       |
| Note on operating and pilot medium      | Lubricated operation possible (subsequently required for further operation)                    |
| Vibration resistance                    | Transport application test at severity level 2 in accordance with FN 942017-4 and EN 60068-2-6 |
| Shock resistance                        | Shock test with severity level 2 in accordance with FN 942017-5 and EN 60068-2-27              |
| Corrosion resistance classification CRC | 1 - Low corrosion stress   |
| PWIS conformity                         | VDMA24364-B2-L   |
| Medium temperature                      | -5 ... 50 °C   |
| Ambient temperature                     | -5 ... 50 °C   |
| Product weight                          | 30.5 g   |
| Electrical connection                   | 2-pin<br>Plug  |
| Mounting type                           | with through hole  |
| Pilot exhaust port 82/84                | Common line  |
| Pneumatic connection, port 1            | Common line  |
| Pneumatic connection, port 2            | QS-3   |

| <b>Feature</b>               | <b>Value</b>       |
|------------------------------|--------------------|
| Pneumatic ports 3/5 combined | Common line        |
| Pneumatic connection, port 4 | QS-3               |
| Materials note               | Conforms to RoHS   |
| Material seals               | NBR                |
| Material housing             | Aluminium die cast |