

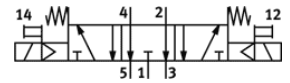
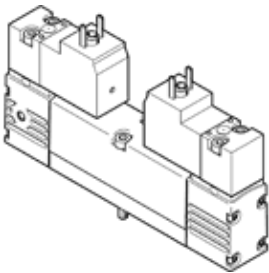
solenoid valve

VSVA-B-P53E-H-A2-5C1

Part number: 547145

FESTO

With square plug, shape C



Data sheet

Feature	Value
Valve function	5/3 exhausted
Type of actuation	electrical
Valve size	18 mm
Standard nominal flow rate	450 l/min
Operating pressure MPa	0.3 ... 1 MPa
Operating pressure	3 ... 10 bar
Design structure	Piston slide
Type of reset	mechanical spring
Protection class	IP65 NEMA 4
Nominal size	5 mm
Exhaust-air function	throttleable
Sealing principle	soft
Assembly position	Any
Conforms to standard	ISO 15407-1 VDMA 24563
Manual override	Pushing
Type of piloting	Piloted
Pilot air supply	Internal
Flow direction	non reversible
Overlap	Positive overlap
Signal status display	LED
Pilot pressure MPa	0.3 ... 1 MPa
Pilot pressure	3 ... 10 bar
Flow rate of valve	650 l/min
Flow rate of valve on individual sub-base	500 l/min
Flow rate of pneumatically linked valve	450 l/min
Switching time off	30 ms
Switching time on	18 ms
Switching time reversal	20 ms
Duty cycle	100 %
Characteristic coil data	12 V DC: 1.8 W
Permissible voltage fluctuation	-15 % / +10 %
Operating medium	Compressed air in accordance with ISO8573-1:2010 [7:4:4]
Note on operating and pilot medium	Lubricated operation possible (subsequently required for further operation)
Vibration resistance	Transport application test at severity level 2 in accordance with FN 942017-4 and EN 60068-2-6
Shock resistance	Shock test with severity level 2 in accordance with FN 942017-5 and EN 60068-2-27
Corrosion resistance classification CRC	0 - No corrosion stress
PWIS conformity	VDMA24364-B1/B2-L
Medium temperature	-5 ... 50 °C
Relative air humidity	0 - 90 %

Feature	Value
Sound pressure level	85 dB(A)
Pilot medium	Compressed air in accordance with ISO8573-1:2010 [7:4:4]
Ambient temperature	-5 ... 50 °C
Max. tightening torque, valve mounting	1 Nm
Product weight	174 g
Electrical connection	Plug pattern type C to EN 175301-803 Per DIN EN 175301-803 Without mains earth
Mounting type	On sub-base
Auxiliary pilot air port 12	Connection plate size 18 mm, according to ISO 15407-1
Auxiliary pilot air port 14	Connection plate size 18 mm, according to ISO 15407-1
Pilot exhaust port 82/84	Not ducted as per standard Ducted
Pneumatic connection, port 1	Connection plate size 18 mm, according to ISO 15407-1
Pneumatic connection, port 2	Connection plate size 18 mm, according to ISO 15407-1
Pneumatic connection, port 3	Connection plate size 18 mm, according to ISO 15407-1
Pneumatic connection, port 4	Connection plate size 18 mm, according to ISO 15407-1
Pneumatic connection, port 5	Connection plate size 18 mm, according to ISO 15407-1
Pilot interface	According to ISO 15218
Materials note	Conforms to RoHS
Material seals	HNBR NBR
Material housing	Aluminium die cast
Material screws	Steel Galvanised