

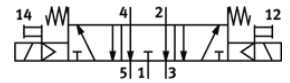
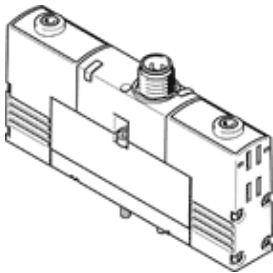
# solenoid valve

## VSVA-B-P53E-H-A2-1R5L

Part number: 546772

FESTO

with central plug, round design M12x1.



## Data sheet

Feature	Value
Valve function	5/3 exhausted
Type of actuation	electrical
Width	18 mm
Standard nominal flow rate	450 l/min
Operating pressure MPa	0.3 ... 0.8 MPa
Operating pressure	3 ... 8 bar
Design structure	Piston slide
Type of reset	mechanical spring
Authorisation	C-Tick c UL us - Recognized (OL)
CE mark (see declaration of conformity)	to EU directive for EMC
UKCA marking (see declaration of conformity)	To UK instructions for EMC To UK RoHS instructions
Protection class	IP65
Nominal size	5 mm
Exhaust-air function	throttleable
Sealing principle	soft
Assembly position	Any
Conforms to standard	ISO 15407-1 VDMA 24563
Manual override	Pushing
Type of piloting	Piloted
Pilot air supply	Internal
Flow direction	non reversible
Overlap	Positive overlap
Polarity protected	for all electrical connections
Additional functions	Reduction of holding current Safety shut-off
Signal status display	LED
Flow rate of valve	650 l/min
Flow rate of valve on individual sub-base	500 l/min
Flow rate of pneumatically linked valve	450 l/min
Switching time off	36 ms
Switching time on	15 ms
Operating voltage range DC	21.6 ... 26.4 V
Duty cycle	100 %
Max. positive test pulse with logic 0	500 µs
Max. negative test pulse with logic 1	500 µs
Characteristic coil data	24 V DC: low-current phase 1 W, high-current phase 2.4 W
Operating medium	Compressed air in accordance with ISO8573-1:2010 [7:4:4]
Note on operating and pilot medium	Lubricated operation possible (subsequently required for further operation)
Vibration resistance	Transport application test at severity level 2 in accordance with FN 942017-4 and EN 60068-2-6

Feature	Value
Shock resistance	Shock test with severity level 2 in accordance with FN 942017-5 and EN 60068-2-27
Corrosion resistance classification CRC	2 - Moderate corrosion stress
PWIS conformity	VDMA24364-B1/B2-L
Medium temperature	-5 ... 50 °C
Relative air humidity	0 - 90 %
Protection against direct and indirect contact	Protective extra-low voltage with safe disconnection (PELV)
Ambient temperature	-5 ... 50 °C
Max. tightening torque, valve mounting	0.9 ... 1.1 Nm
Product weight	140 g
Electrical connection	3-pin M12x1 Central plug Round design
Mounting type	On sub-base
Materials note	Conforms to RoHS