

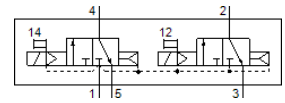
# solenoid valve

## VSVA-B-T32C-AH-A2-1C1

Part number: 546693

FESTO

With square plug, shape C



## Data sheet

| Feature                                   | Value  |
|---|--|
| Valve function                            | 2x3/2 closed, monostable   |
| Type of actuation                         | electrical   |
| Valve size                                | 18 mm  |
| Standard nominal flow rate                | 400 l/min  |
| Operating pressure MPa                    | 0.2 ... 1 MPa  |
| Operating pressure                        | 2 ... 10 bar   |
| Design structure                          | Piston slide   |
| Type of reset                             | Air spring   |
| Authorisation                             | c UL us - Recognized (OL)  |
| Protection class                          | IP65<br>NEMA 4   |
| Nominal size                              | 5 mm   |
| Exhaust-air function                      | throttleable   |
| Sealing principle                         | soft   |
| Assembly position                         | Any  |
| Conforms to standard                      | ISO 15407-1<br>VDMA 24563  |
| Manual override                           | Pushing  |
| Type of piloting                          | Piloted  |
| Pilot air supply                          | Internal   |
| Flow direction                            | non reversible   |
| Overlap                                   | Positive overlap   |
| Signal status display                     | LED  |
| Pilot pressure MPa                        | 0.3 ... 1 MPa  |
| Pilot pressure                            | 3 ... 10 bar   |
| Flow rate of valve                        | 600 l/min  |
| Flow rate of valve on individual sub-base | 450 l/min  |
| Flow rate of pneumatically linked valve   | 400 l/min  |
| Switching time off                        | 21 ms  |
| Switching time on                         | 13 ms  |
| Duty cycle                                | 100 %  |
| Max. positive test pulse with logic 0     | 1,800 µs   |
| Max. negative test pulse with logic 1     | 800 µs   |
| Characteristic coil data                  | 24 V DC: 1.8 W   |
| Permissible voltage fluctuation           | -15 % / +10 %  |
| Operating medium                          | Compressed air in accordance with ISO8573-1:2010 [7:4:4]                                       |
| Note on operating and pilot medium        | Lubricated operation possible (subsequently required for further operation)                    |
| Vibration resistance                      | Transport application test at severity level 2 in accordance with FN 942017-4 and EN 60068-2-6 |
| Shock resistance                          | Shock test with severity level 2 in accordance with FN 942017-5 and EN 60068-2-27              |
| Corrosion resistance classification CRC   | 0 - No corrosion stress  |
| PWIS conformity                           | VDMA24364-B1/B2-L  |

| <b>Feature</b>                         | <b>Value</b>   |
|--|--|
| Medium temperature                     | -5 ... 50 °C   |
| Relative air humidity                  | 0 - 90 %   |
| Sound pressure level                   | 85 dB(A)   |
| Pilot medium                           | Compressed air in accordance with ISO8573-1:2010 [7:4:4]                             |
| Ambient temperature                    | -5 ... 50 °C   |
| Max. tightening torque, valve mounting | 0.9 ... 1.1 Nm   |
| Product weight                         | 174 g  |
| Electrical connection                  | Plug pattern type C to EN 175301-803<br>Per DIN EN 175301-803<br>Without mains earth |
| Mounting type                          | On sub-base  |
| Auxiliary pilot air port 12            | Connection plate size 18 mm, according to ISO 15407-1                                |
| Auxiliary pilot air port 14            | Connection plate size 18 mm, according to ISO 15407-1                                |
| Pilot exhaust port 82/84               | Not ducted as per standard<br>Ducted   |
| Pneumatic connection, port 1           | Connection plate size 18 mm, according to ISO 15407-1                                |
| Pneumatic connection, port 2           | Connection plate size 18 mm, according to ISO 15407-1                                |
| Pneumatic connection, port 3           | Connection plate size 18 mm, according to ISO 15407-1                                |
| Pneumatic connection, port 4           | Connection plate size 18 mm, according to ISO 15407-1                                |
| Pneumatic connection, port 5           | Connection plate size 18 mm, according to ISO 15407-1                                |
| Pilot interface                        | According to ISO 15218   |
| Materials note                         | Conforms to RoHS   |
| Material seals                         | HNBR<br>NBR  |
| Material housing                       | Aluminium die cast   |
| Material screws                        | Steel<br>Galvanised  |