

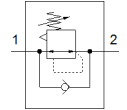
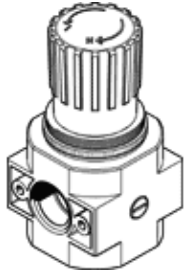
basic valve

LR-D-7-DI-MAXI

Part number: 546513
 Classic - do not use for new projects

without threaded connecting plates.

Modern alternatives can be found by entering the first four characters of the type code in the search field.



Data sheet

Feature	Value
Size	Maxi
Series	D
Actuator lock	Rotary knob with lock
Assembly position	Any
Design structure	directly-controlled diaphragm regulator
Controller function	Output pressure constant with initial pressure compensation with secondary exhaust with return flow
Pressure gauge	Prepared for G1/4
Operating pressure	13.8 ... 240 Psi
Pressure regulation range	6.9 ... 105 Psi
Max. pressure hysteresis	6 Psi
Standard nominal flow rate	255.5 cfm
Operating medium	Compressed air in accordance with ISO8573-1:2010 [7:4:4] Inert gases
Note on operating and pilot medium	Lubricated operation possible (subsequently required for further operation)
Corrosion resistance classification CRC	2 - Moderate corrosion stress
PWIS conformity	VDMA24364-B1/B2-L
Air purity class at output	Compressed air in accordance with ISO8573-1:2010 [7:4:4] Inert gases
Medium temperature	14 ... 140 °F
Ambient temperature	14 ... 140 °F
Product weight	46.55 oz
Mounting type	Front panel installation Line installation with accessories
Materials note	Conforms to RoHS
Material seals	NBR
Material housing	Zinc die-casting
Material membrane	NBR