

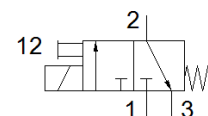
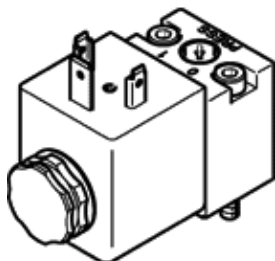
Solenoid valve

MDH-3/2-110AC-PI

Part number: 546020
Product to be discontinued

FESTO

Directly actuated, with solenoid coil and manual override, without plug socket.



Data sheet

Feature	Value
Valve function	3/2 closed, monostable
Type of actuation	electrical
Width	30 mm
Standard nominal flow rate	20 l/min
Operating pressure	0.5 ... 10 bar
Design structure	Poppet seat
Type of reset	mechanical spring
Protection class	IP65 NEMA 4
Nominal size	0.8 mm
Grid dimension	100 mm
Exhaust-air function	not throttleable
Based on the standard	ISO 15218
Sealing principle	soft
Assembly position	Any
Conforms to standard	ISO 15218
Manual override	detenting Pushing
Type of piloting	direct
Flow direction	non reversible
Freedom from overlap	No
b value	0.46
C value	0.075 l/sbar
Switching time off	8 ms
Switching time on	12 ms
Duty cycle	100%
Characteristic coil data	110 V AC: 50 Hz, pick-up power 6.6 VA, holding power 4.0 VA 110 V AC: 60 Hz, pick-up power 5.5 VA, holding power 3.0 VA
Permissible frequency fluctuation	+/- 10 %
Permissible voltage fluctuation	-15 % / +10 %
Operating medium	Compressed air in accordance with ISO8573-1:2010 [7:4:4]
Note on operating and pilot medium	Lubricated operation possible (subsequently required for further operation)
CE mark (see declaration of conformity)	to EU directive low-voltage devices
Corrosion resistance classification CRC	2
Medium temperature	-20 ... 60 °C
Ambient temperature	-20 ... 60 °C
Product weight	140 g
Electrical connection	Per DIN EN 175301-803 Design A
Mounting type	On sub-base with through hole
Pneumatic connection, port 1	Sub-base
Pneumatic connection, port 2	Sub-base
Pneumatic connection, port 3	Non-ducted
Materials note	Conforms to RoHS
Materials information for seals	HNBR