

# vertical pressure shut-off plate

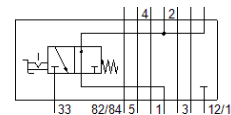
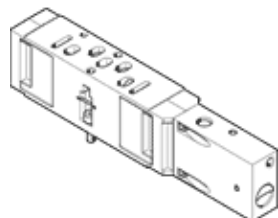
## VABF-S3-1-L1D1-C

Part number: 543602

FESTO

For valve terminal VDMA-01/02, standard port pattern to 15407-1, for mounting between manifold sub-base and valve, supply pressure of the terminal is blocked.

Dismantling of the valve is possible without shutting off the pressure of the terminal.



## Data sheet

Feature	Value
Width	26 mm
Based on the standard	ISO 15407-1
Assembly position	Any
Pneumatic vertical stacking	Shut-off for 1
Operating pressure	-0.9 ... 10 bar
Standard nominal flow rate	800 l/min
Operating medium	Compressed air in accordance with ISO8573-1:2010 [7:4:4]
Note on operating and pilot medium	Lubricated operation possible (subsequently required for further operation)
Corrosion resistance classification CRC	0 - No corrosion stress
PWIS conformity	VDMA24364-B1/B2-L
Protection class	IP65 NEMA 4
Ambient temperature	-5 ... 50 °C
Product weight	286 g
Vertical stacking type of mounting	on manifold block on individual sub-base
Materials note	Conforms to RoHS
Material housing	Aluminium die cast