

vertical pressure shut-off plate

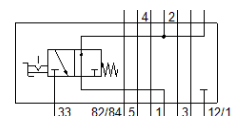
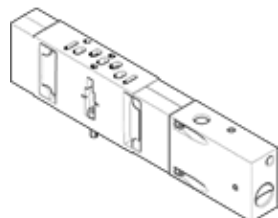
VABF-S3-2-L1D1-C

Part number: 543601

FESTO

For valve terminal VDMA-01/02, standard port pattern to 15407-1, for mounting between manifold sub-base and valve, supply pressure of the terminal is blocked.

Dismantling of the valve is possible without shutting off the pressure of the terminal.



Data sheet

Feature	Value
Width	18 mm
Based on the standard	ISO 15407-1
Assembly position	Any
Pneumatic vertical stacking	Shut-off for 1
Operating pressure	-0.9 ... 10 bar
Standard nominal flow rate	400 l/min
Operating medium	Compressed air in accordance with ISO8573-1:2010 [7:4:4]
Note on operating and pilot medium	Lubricated operation possible (subsequently required for further operation)
Corrosion resistance classification CRC	0 - No corrosion stress
PWIS conformity	VDMA24364-B1/B2-L
Protection class	IP65 NEMA 4
Ambient temperature	-5 ... 50 °C
Product weight	212 g
Vertical stacking type of mounting	on manifold block on individual sub-base
Materials note	Conforms to RoHS
Material housing	Aluminium die cast