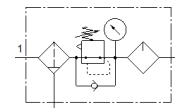
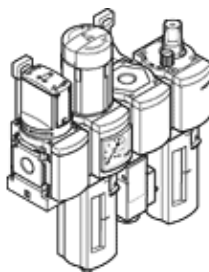


service unit combination MSB4N-1/4:C3J4F3M1-WP

Part number: 543567

FESTO

Comprising manual on-off valve, filter regulator, branching module with pressure switch without display, lubricator, wall mounting plate.
Maximum output pressure 12 bar, 5 µm filter, with pressure gauge, lockable regulator head, plastic bowl with plastic bowl guard, fully automatic condensate drain, flow direction from left to right.



Data sheet

| Feature | Value |
|---|--|
| Size | 4 |
| Series | MS |
| Actuator lock | Rotary knob with integrated lock |
| Assembly position | Vertical +/- 5° |
| Grade of filtration | 5 µm |
| Condensate drain | fully automatic |
| Design structure | Filter regulator with pressure gauge proportional standard mist lubricator |
| Controller function | Output pressure constant with initial pressure compensation with secondary exhaust with return flow |
| Bowl guard | Plastic guard |
| Pressure gauge | with pressure gauge |
| Operating pressure | 2 ... 12 bar |
| Pressure regulation range | 1 ... 12 bar |
| Standard nominal flow rate | 900 l/min |
| Operating medium | Compressed air in accordance with ISO8573-1:2010 [7:4:4] Inert gases |
| Note on operating and pilot medium | Lubricated operation possible (subsequently required for further operation) |
| Corrosion resistance classification CRC | 2 - Moderate corrosion stress |
| PWIS conformity | VDMA24364-B1/B2-L |
| Storage temperature | -10 ... 60 °C |
| Food-safe | See Supplementary material information |
| Air purity class at output | Compressed air in accordance with ISO8573-1:2010 [6:4:-] |
| Medium temperature | 5 ... 60 °C |
| Ambient temperature | 5 ... 60 °C |
| Product weight | 1,700 g |
| Mounting type | with accessories |
| Pneumatic connection, port 1 | 1/4 NPT |
| Pneumatic connection, port 2 | 1/4 NPT |
| Pneumatic connection, port 3 | 1/4 NPT |
| Material housing | Aluminium die cast |
| Material bowl | PC |