

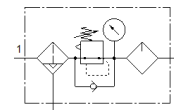
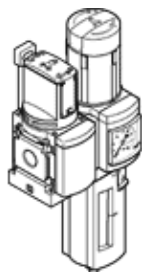
service unit combination

MSB4N-1/4:C3J2-WP

Part number: 543559

FESTO

Comprising manual on-off valve, filter regulator, wall mounting plate. Maximum output pressure 12 bar, 40 µm filter, with pressure gauge, lockable regulator head, plastic bowl with plastic bowl guard, fully automatic condensate drain, flow direction from left to right.



Data sheet

| Feature | Value |
|---|--|
| Size | 4 |
| Series | MS |
| Actuator lock | Rotary knob with integrated lock |
| Assembly position | Vertical +/- 5° |
| Grade of filtration | 40 µm |
| Condensate drain | fully automatic |
| Design structure | Filter regulator with pressure gauge proportional standard mist lubricator |
| Controller function | Output pressure constant with initial pressure compensation with secondary exhaust with return flow |
| Bowl guard | Plastic guard |
| Pressure gauge | with pressure gauge |
| Operating pressure | 2 ... 12 bar |
| Pressure regulation range | 0.5 ... 12 bar |
| Standard nominal flow rate | 800 l/min |
| Operating medium | Compressed air in accordance with ISO8573-1:2010 [7:4:4] Inert gases |
| Note on operating and pilot medium | Lubricated operation possible (subsequently required for further operation) |
| Corrosion resistance classification CRC | 2 - Moderate corrosion stress |
| PWIS conformity | VDMA24364-B1/B2-L |
| Storage temperature | -10 ... 60 °C |
| Food-safe | See Supplementary material information |
| Air purity class at output | Compressed air in accordance with ISO8573-1:2010 [7:4:4] |
| Medium temperature | 5 ... 60 °C |
| Ambient temperature | 5 ... 60 °C |
| Product weight | 1,300 g |
| Mounting type | with accessories |
| Pneumatic connection, port 1 | 1/4 NPT |
| Pneumatic connection, port 2 | 1/4 NPT |
| Pneumatic connection, port 3 | 1/4 NPT |
| Material housing | Aluminium die cast |
| Material bowl | PC |