

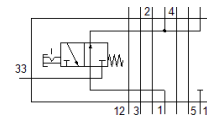
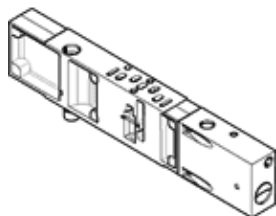
vertical pressure shut-off plate

VABF-S4-2-L1D1-C

Part number: 542884

FESTO

For valve terminals VTSA and VTSA-F, standard port pattern to 15407-2, for mounting between manifold sub-base and valve, supply pressure of the terminal is blocked. Dismantling of the valve is possible without shutting off the pressure of the terminal.



Data sheet

Feature	Value
Width	18 mm
Based on the standard	ISO 15407-2
Assembly position	Any
Operating pressure MPa	1 MPa
Operating pressure	10 bar
CE mark (see declaration of conformity)	to EU directive low-voltage devices
UKCA marking (see declaration of conformity)	To UK instructions for electrical equipment
Operating medium	Compressed air in accordance with ISO8573-1:2010 [7:4:4]
Note on operating and pilot medium	Lubricated operation possible (subsequently required for further operation)
Corrosion resistance classification CRC	0 - No corrosion stress
PWIS conformity	VDMA24364-B1/B2-L
Protection class	IP65 NEMA 4
Pilot medium	Compressed air in accordance with ISO8573-1:2010 [7:4:4]
Ambient temperature	-5 ... 50 °C
Product weight	209 g
Vertical stacking type of mounting	on manifold block on individual sub-base
Material housing	Aluminium die cast