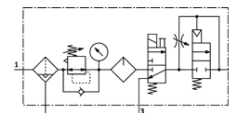
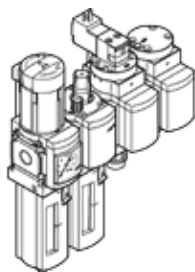


# Service unit combination MSB6-1/2:J4M1D7A1-WP

Part number: 542650

FESTO

Comprising filter regulator, lubricator, electrical on-off valve, pneumatic soft-start valve, wall mounting plate. Maximum output pressure 9 bar, 5 µm filter, with pressure gauge, lockable regulator head, plastic bowl with plastic bowl guard, fully automatic condensate drain, flow direction from left to right.



## Data sheet

| Feature                                 | Value  |
|---|--|
| Size                                    | 6  |
| Series                                  | MS   |
| Actuator lock                           | Rotary knob with lock<br>with accessories, lockable  |
| Assembly position                       | Vertical +/- 5°  |
| Grade of filtration                     | 5 µm   |
| Condensate drain                        | fully automatic  |
| Design structure                        | Start-up valve<br>On/off valve<br>Filter regulator with pressure gauge<br>Standard oil-mist lubricator       |
| Controller function                     | Output pressure constant<br>with initial pressure compensation<br>with secondary exhaust<br>with return flow |
| Bowl guard                              | Plastic guard  |
| Pressure gauge                          | with pressure gauge  |
| Operating pressure                      | 4.5 ... 10 bar   |
| Pressure control range                  | 4 ... 9 bar  |
| Standard nominal flow rate              | 1,900 l/min  |
| Characteristic coil data                | 24V DC: 2,5W   |
| Operating medium                        | Compressed air in accordance with ISO8573-1:2010 [7:4:-]<br>Inert gases                                      |
| Note on operating and pilot medium      | Lubricated operation possible (subsequently required for further operation)                                  |
| Corrosion resistance classification CRC | 2  |
| Storage temperature                     | -10 ... 60 °C  |
| Air purity class at output              | Compressed air in accordance with ISO8573-1:2010 [6:4:-]   |
| Medium temperature                      | 5 ... 50 °C  |
| Ambient temperature                     | 5 ... 50 °C  |
| Product weight                          | 3,000 g  |
| Mounting type                           | with accessories   |
| Pneumatic connection, port 1            | G1/2   |
| Pneumatic connection, port 2            | G1/2   |
| Pneumatic connection, port 3            | G1/2   |
| Materials information, housing          | Aluminium die cast   |
| Materials information for bowl          | PC   |