

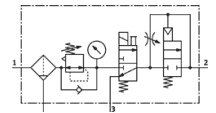
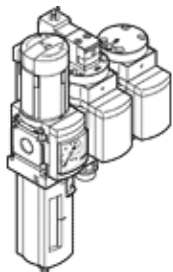
# Service unit combination

## MSB4-1/4:J2D7A1-WP

Part number: 542629

FESTO

Comprising filter regulator, electrical on-off valve, pneumatic soft-start valve, wall mounting plate. Maximum output pressure 9 bar, 40 µm filter, with pressure gauge, lockable regulator head, plastic bowl with plastic bowl guard, fully automatic condensate drain, flow direction from left to right.



### Data sheet

Feature	Value
Size	4
Series	MS
Actuator lock	Rotary knob with lock with accessories, lockable
Assembly position	Vertical +/- 5°
Grade of filtration	40 µm
Condensate drain	fully automatic
Design structure	Branching module Start-up valve Pressure sensor On/off valve Filter regulator with pressure gauge Standard oil-mist lubricator
Controller function	Output pressure constant with initial pressure compensation with secondary exhaust with return flow
Bowl guard	Plastic guard
Pressure gauge	with pressure gauge
Operating pressure	4.5 ... 10 bar
Pressure control range	4 ... 9 bar
Standard nominal flow rate	750 l/min
Characteristic coil data	24V DC
Operating medium	Compressed air in accordance with ISO8573-1:2010 [7:4:-] Inert gases
Note on operating and pilot medium	Lubricated operation possible (subsequently required for further operation)
Corrosion resistance classification CRC	2
Storage temperature	-10 ... 60 °C
Air purity class at output	Compressed air in accordance with ISO8573-1:2010 [7:4:4]
Medium temperature	-10 ... 50 °C
Ambient temperature	-10 ... 50 °C
Product weight	1,600 g
Mounting type	with accessories
Pneumatic connection, port 1	G1/4
Pneumatic connection, port 2	G1/4
Pneumatic connection, port 3	G1/4
Materials information, housing	Aluminium die cast
Materials information for bowl	PC