

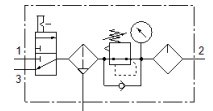
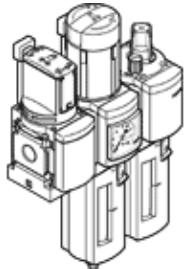
# service unit combination

## MSB4-1/4:C3J1M1-WP

Part number: 542296

FESTO

Consisting of manual on-off valve, filter regulator, lubricator and wall mounting plate. 12 bar maximum output pressure, 40 µm filter, with pressure gauge, lockable regulator head, plastic bowl with plastic bowl guard, manual condensate drain, direction of flow: from left to right.



## Data sheet

Feature	Value
Size	4
Series	MS
Actuator lock	Rotary knob with lock with accessories, lockable
Assembly position	Vertical +/- 5°
Grade of filtration	40 µm
Condensate drain	manual rotary
Design structure	On/off valve Filter regulator with pressure gauge Standard oil-mist lubricator
Controller function	Output pressure constant with initial pressure compensation with secondary exhaust with return flow
Bowl guard	Plastic guard
Pressure gauge	with pressure gauge
Operating pressure	1.5 ... 14 bar
Pressure regulation range	1 ... 12 bar
Standard nominal flow rate	750 l/min
Operating medium	Compressed air in accordance with ISO8573-1:2010 [7:4:4] Inert gases
Note on operating and pilot medium	Lubricated operation possible (subsequently required for further operation)
Corrosion resistance classification CRC	2 - Moderate corrosion stress
PWIS conformity	VDMA24364-B1/B2-L
Storage temperature	-10 ... 60 °C
Food-safe	See Supplementary material information
Air purity class at output	Compressed air in accordance with ISO8573-1:2010 [7:4:-]
Medium temperature	-10 ... 60 °C
Ambient temperature	-10 ... 60 °C
Product weight	1,500 g
Mounting type	with accessories
Pneumatic connection, port 1	G1/4
Pneumatic connection, port 2	G1/4
Pneumatic connection, port 3	G1/4
Material housing	Aluminium die cast
Material bowl	PC