

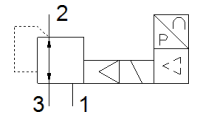
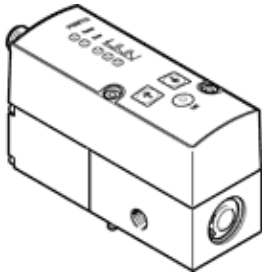
proportional pressure regulator

VPPM-6L-L-1-G18-0L2H-V1N

Part number: 542233

FESTO

with electric setpoint specification and two-stage control circuit for stable, precise characteristic of regulation.



Data sheet

| Feature | Value |
|--|--|
| Nominal diameter, pressurisation | 6 mm |
| Nominal diameter, exhaust | 4.5 mm |
| Type of actuation | electrical |
| Sealing principle | soft |
| Assembly position | Any |
| Design structure | Pilot actuated diaphragm regulator |
| Short circuit strength | for all electrical connections |
| Safety instructions | VPPM safety position: If the power supply cable is interrupted, output pressure is maintained unregulated. |
| Polarity protected | for all electrical connections |
| Type of reset | mechanical spring |
| Type of piloting | Piloted |
| Valve function | 3-way proportional-pressure regulator |
| Type of display | LED |
| Pressure regulation range MPa | 0.002 ... 0.2 MPa |
| Pressure regulation range | 0.02 ... 2 bar |
| Inlet pressure 1 | 0 ... 4 bar |
| Supply pressure 1 MPa | 0 ... 0.4 MPa |
| Max. pressure hysteresis | 0.01 bar |
| Standard nominal flow rate | 380 l/min |
| Operating voltage range DC | 21.6 ... 26.4 V |
| Max. current consumption | 300 mA |
| Duty cycle | 100 % |
| Max. electrical power consumption | 7 W |
| Residual ripple | 10 % |
| Switch output | NPN |
| Signal range, analogue output | 0 - 10 V |
| Signal range, analogue input | 0 - 10 V |
| Operating medium | Compressed air in accordance with ISO8573-1:2010 [7:4:4] Inert gases |
| Note on operating and pilot medium | Lubricated operation not possible |
| Authorisation | RCM Mark c UL us - Listed (OL) |
| KC mark | KC-EMV |
| CE mark (see declaration of conformity) | to EU directive for EMC in accordance with EU RoHS directive |
| UKCA marking (see declaration of conformity) | To UK instructions for EMC To UK RoHS instructions |
| Certificate issuing department | UL E322346 |
| Corrosion resistance classification CRC | 2 - Moderate corrosion stress |
| PWIS conformity | VDMA24364-B1/B2-L |
| Medium temperature | 10 ... 50 °C |
| Protection class | IP65 |

| Feature | Value |
|------------------------------|---|
| Ambient temperature | 0 ... 60 °C |
| Product weight | 400 g |
| Linearity | 1 %FS |
| Hysteresis | 0.5 %FS |
| Reproducibility | 0.5 %FS |
| Overall accuracy | 1,25 %FS |
| Temperature coefficient | 0.04 %/K |
| FS repetition accuracy | 0.5 % |
| Electrical connection | 8-pin M12 Plug |
| Mounting type | with through hole with accessories Optional |
| Pneumatic connection, port 1 | G1/8 |
| Pneumatic connection, port 2 | G1/8 |
| Pneumatic connection, port 3 | G1/8 |
| Materials note | Conforms to RoHS |
| Material housing | Wrought Aluminium alloy Anodised |