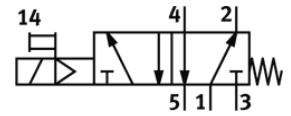
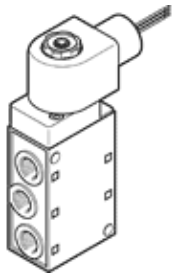


# solenoid valve

## MFH-5-1/4-24-EX

Part number: 541661

FESTO



## Data sheet

Feature	Value
Valve function	5/2 closed, monostable
Type of actuation	electrical
Width	73 mm
Standard nominal flow rate	1,000 l/min
Operating pressure MPa	0.22 ... 0.8 MPa
Operating pressure	2.2 ... 8 bar
Type of reset	mechanical spring
Explosion protection certification outside the EU	Class I, Div. 1 (US) Class I, Div. 2 (US) Class II, Div. 1 (US) Class II, Div. 2 (US) Class III, Div. 1 (US) Class III, Div. 2 (US) EPL Gb (US) EPL Gc (US)
Certificate issuing department	FM 3026030
Protection class	IP65
Nominal size	7 mm
Exhaust-air function	throttleable
Sealing principle	soft
Assembly position	Any
Manual override	detenting
Type of piloting	Piloted
Flow direction	non reversible
Overlap	Underlap
Switching time off	29 ms
Switching time on	10 ms
Characteristic coil data	24 V DC: 4.6 W
Operating medium	Compressed air in accordance with ISO8573-1:2010 [7:4:4]
Note on operating and pilot medium	Lubricated operation possible (subsequently required for further operation)
Corrosion resistance classification CRC	1 - Low corrosion stress
Medium temperature	-5 ... 40 °C
Ambient temperature	-5 ... 40 °C
Product weight	450 g
Mounting type	with through hole
Scavenging orifice connection	Internal
Pilot exhaust port 84	M5
Pneumatic connection, port 1	G1/4
Pneumatic connection, port 2	G1/4
Pneumatic connection, port 3	G1/4
Pneumatic connection, port 4	G1/4
Pneumatic connection, port 5	G1/4
Material seals	NBR PU
Material housing	Aluminium die cast Anodised