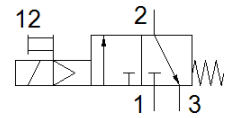
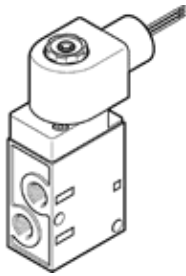


solenoid valve

MFH-3-1/4-120-EX

Part number: 541659

FESTO



Data sheet

| Feature | Value |
|---|--|
| Valve function | 3/2 closed, monostable |
| Type of actuation | electrical |
| Width | 73 mm |
| Standard nominal flow rate | 800 l/min |
| Operating pressure MPa | 0.15 ... 0.8 MPa |
| Operating pressure | 1.5 ... 8 bar |
| Type of reset | mechanical spring |
| Explosion protection certification outside the EU | Class I, Div. 1 (US) Class I, Div. 2 (US) Class II, Div. 1 (US) Class II, Div. 2 (US) Class III, Div. 1 (US) Class III, Div. 2 (US) EPL Gb (US) EPL Gc (US) |
| Certificate issuing department | FM 3026030 |
| Protection class | IP65 |
| Nominal size | 5 mm |
| Exhaust-air function | throttleable |
| Sealing principle | soft |
| Assembly position | Any |
| Manual override | detenting |
| Type of piloting | Piloted |
| Flow direction | non reversible |
| Overlap | Underlap |
| Switching time off | 29 ms |
| Switching time on | 12 ms |
| Characteristic coil data | 120 V AC: 60 Hz, pick-up power 11.5 VA, holding power 6.5 VA |
| Operating medium | Compressed air in accordance with ISO8573-1:2010 [7:4:4] |
| Note on operating and pilot medium | Lubricated operation possible (subsequently required for further operation) |
| Corrosion resistance classification CRC | 1 - Low corrosion stress |
| Medium temperature | -5 ... 40 °C |
| Ambient temperature | -5 ... 40 °C |
| Product weight | 425 g |
| Mounting type | with through hole |
| Scavenging orifice connection | Internal |
| Pilot exhaust port 82 | M5 |
| Pneumatic connection, port 1 | G1/4 |
| Pneumatic connection, port 2 | G1/4 |
| Pneumatic connection, port 3 | G1/4 |
| Material seals | NBR PU |
| Material housing | Aluminium die cast Anodised |