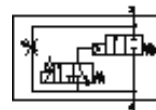
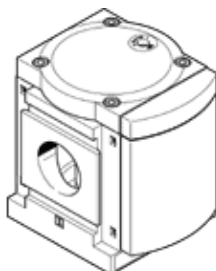


# soft-start valve MS12-DE-G-V24

Part number: 541498

FESTO

To slowly pressurise and exhaust pneumatic equipment



## Data sheet

| Feature                                 | Value   |
|---|---|
| Exhaust-air function                    | throttleable  |
| Type of actuation                       | electrical  |
| Assembly position                       | Any   |
| Manual override                         | detenting<br>Pushing  |
| Design structure                        | Piston seat   |
| Type of reset                           | mechanical spring   |
| Type of piloting                        | Piloted   |
| Pilot air supply                        | Internal  |
| Flow direction                          | non reversible  |
| Valve function                          | 2/2   |
| Switching position indicator            | with accessories  |
| Operating pressure                      | 3 ... 16 bar  |
| Standard nominal flow rate              | 25,000 ... 42,000 l/min   |
| Duty cycle                              | 100 %   |
| Characteristic coil data                | 24 V DC: 8.4 W<br>42 V AC: 50 Hz, pick-up power 14.0 VA, holding power 10.0 VA<br>42 V AC: 60 Hz, pick-up power 12.0 VA, holding power 7.0 VA |
| Operating medium                        | Compressed air in accordance with ISO8573-1:2010 [-:~:]   |
| Corrosion resistance classification CRC | 2 - Moderate corrosion stress   |
| PWIS conformity                         | VDMA24364-B1/B2-L   |
| Medium temperature                      | -10 ... 50 °C   |
| Protection class                        | IP65  |
| Ambient temperature                     | -10 ... 50 °C   |
| Product weight                          | 3,800 g   |
| Electrical connection                   | Per DIN EN 175301-803<br>Cubic design   |
| Signal status display                   | with accessories  |
| Mounting type                           | Line installation<br>with accessories<br>Optional   |
| Pneumatic connection, port 1            | Manifold module   |
| Pneumatic connection, port 2            | Manifold module   |
| Material seals                          | NBR   |
| Material housing                        | Aluminium die cast  |