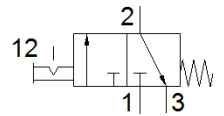
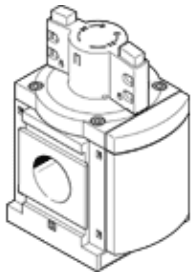


on-off valve MS12-EM-G

Part number: 541495

FESTO

Manual for pressurising and exhausting pneumatic equipment



Data sheet

Feature	Value
Design structure	Piston slide
Type of actuation	manual
Exhaust-air function	not throttleable
Type of piloting	direct
Valve function	3/2 bistable
Operating pressure	0 ... 20 bar
Standard nominal flow rate	25,000 ... 32,000 l/min
Operating medium	Compressed air in accordance with ISO8573-1:2010 [-:-:-]
Corrosion resistance classification CRC	2 - Moderate corrosion stress
PWIS conformity	VDMA24364-B1/B2-L
Medium temperature	-10 ... 60 °C
Ambient temperature	-10 ... 60 °C
Mounting type	Line installation with accessories Optional
Assembly position	Any
Flow direction	non reversible
Product weight	3,900 g
Pneumatic connection, port 1	Manifold module
Pneumatic connection, port 2	Manifold module
Pneumatic connection, port 3	G1
Pilot air supply	Internal
Material seals	NBR
Material housing	Aluminium die cast