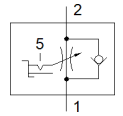


one-way flow control valve GRLSA-1/8-QS-6

Part number: 540661

FESTO

With fix offset, for optimal setting of the flow rate.



Data sheet

Feature	Value
Valve function	One-way flow control function for exhaust air
Pneumatic connection, port 1	QS-6
Pneumatic connection, port 2	G1/8
Type of actuation	manual
Adjusting element	Internal hex
Mounting type	Threaded
Standard nominal flow rate in flow control direction	0 ... 250 l/min
Standard nominal flow rate in non-return direction	180 ... 310 l/min
Ambient temperature	-10 ... 60 °C
Assembly position	Any
Operating pressure complete temperature range	0.2 ... 10 bar
Standard flow rate in flow control direction 0.6->0 MPa (6->0 bar, 87->0 psi)	0 ... 410 l/min
Standard flow rate in non-return direction at 0.6->0 MPa (6->0 bar, 87->0 psi)	430 ... 540 l/min
Operating medium	Compressed air in accordance with ISO8573-1:2010 [7:4:4]
Note on operating and pilot medium	Lubricated operation possible (subsequently required for further operation)
PWIS conformity	VDMA24364-B2-L
Storage temperature	-10 ... 40 °C
Medium temperature	-10 ... 60 °C
Nominal tightening torque	3.5 Nm
Tolerance for nominal tightening torque	± 20 %
Product weight	19.5 g
Material seals	NBR
Material hollow bolt	Wrought Aluminium alloy Anodised
Material release ring	POM
Material adjusting screw	PA-reinforced
Material swivel fitting	Zinc die-casting