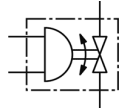
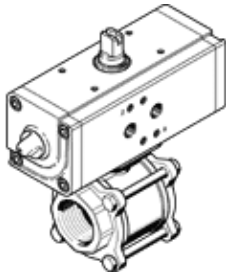


# Ball valve with drive unit VZPR-BPD-22-R38R

Part number: 540527

FESTO

Comprising pneumatic DAPS semi-rotary drive, combined with a 2/2-way VAPB ball valve in stainless steel version.



## Data sheet

Feature	Value
Design structure	2-way ball valve Swivel drive
Type of actuation	electrical pneumatic
Assembly position	Any
Mounting type	CNOMO with internal (female) thread
Process valve connection	Rp3/8
Switching position indicator	Knob direction = Flow direction
Nominal diameter DN	12
Operating pressure, ball valve drive	1 ... 8.4 bar
Nominal pressure of process valve	63
Medium temperature	-20 ... 150 °C
Ambient temperature	-20 ... 80 °C
Materials note	Contains PWIS substances
Food-industry approval	No
Product weight	1,200 g
Corrosion resistance classification CRC	3