

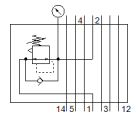
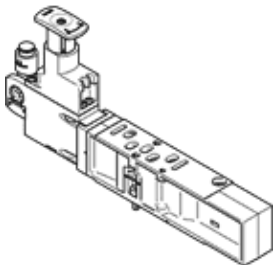
# regulator plate

## VABF-S4-1-R1C2-C-10

Part number: 540154

FESTO

For valve terminals VTSA and VTSA-F, standard port pattern to 15407-2, up to max. 10 bar.



## Data sheet

| Feature                                      | Value   |
|--|---|
| Width  | 26 mm   |
| Based on the standard                        | ISO 15407-2   |
| Assembly position                            | Any   |
| Controller function                          | Output pressure constant with secondary exhaust                             |
| Pressure gauge selection                     | possible  |
| Operating pressure MPa                       | 1 MPa   |
| Operating pressure                           | 10 bar  |
| Pressure regulation range MPa                | 0.05 ... 0.85 MPa   |
| Pressure regulation range                    | 0.5 ... 8.5 bar   |
| Pressure regulation range psi                | 7.25 ... 123.25 psi   |
| Inlet pressure 1                             | 0.5 ... 10 bar  |
| CE mark (see declaration of conformity)      | to EU directive low-voltage devices   |
| UKCA marking (see declaration of conformity) | To UK instructions for electrical equipment                                 |
| Operating medium                             | Compressed air in accordance with ISO8573-1:2010 [7:4:4]                    |
| Note on operating and pilot medium           | Lubricated operation possible (subsequently required for further operation) |
| Corrosion resistance classification CRC      | 0 - No corrosion stress   |
| PWIS conformity                              | VDMA24364-B1/B2-L   |
| Protection class                             | IP65<br>NEMA 4  |
| Pilot medium                                 | Compressed air in accordance with ISO8573-1:2010 [7:4:4]                    |
| Ambient temperature                          | -5 ... 50 °C  |
| Product weight                               | 402 g   |
| Vertical stacking type of mounting           | on manifold block<br>on individual sub-base                                 |
| Pressure gauge connection                    | with retaining clamp  |
| Material control panel                       | PA  |
| Material regulator housing                   | Aluminium die cast  |