

proportional pressure regulator

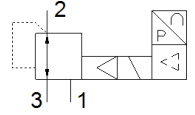
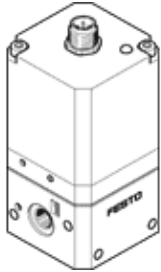
VPPE-3-1/8-6-010

Part number: 539639

★ Core product range

FESTO

Pressure regulation with electrical setpoint specification, suitable for block mounting



Data sheet

Feature	Value
Nominal diameter, pressurisation	5 mm
Nominal diameter, exhaust	2.5 mm
Type of actuation	electrical
Sealing principle	soft
Assembly position	Any Preferably vertical
Design structure	Piloted piston regulator
Short circuit strength	for all electrical connections
Safety instructions	VPPE safety position: If the power supply cable is interrupted, output pressure is maintained unregulated.
Polarity protected	for all electrical connections
Valve function	3-way closed proportional-pressure regulator
Operating pressure MPa	0.8 MPa
Operating pressure	≤ 8 bar
Pressure regulation range MPa	0.015 ... 0.6 MPa
Pressure regulation range	0.15 ... 6 bar
Inlet pressure 1	6 ... 8 bar
Supply pressure 1 MPa	0.6 ... 0.8 MPa
Max. pressure hysteresis (MPa)	0.015 MPa
Max. pressure hysteresis	0.15 bar
Standard nominal flow rate	850 l/min
Switching time off	1,300 ms
Switching time on	550 ms
Operating voltage range DC	21.6 ... 26.4 V
Max. current consumption	150 mA
Max. electrical power consumption	3.6 W
Residual ripple	10 %
SETPOINT/ACTUAL values	Voltage type 0 - 10 V
Operating medium	Compressed air in accordance with ISO8573-1:2010 [7:4:4] Inert gases
Note on operating and pilot medium	Lubricated operation not possible
Authorisation	RCM Mark c UL us - Listed (OL)
KC mark	KC-EMV
CE mark (see declaration of conformity)	to EU directive for EMC in accordance with EU RoHS directive
UKCA marking (see declaration of conformity)	To UK instructions for EMC To UK RoHS instructions
Certificate issuing department	UL E322346
Corrosion resistance classification CRC	2 - Moderate corrosion stress
PWIS conformity	VDMA24364-B2-L
Medium temperature	10 ... 50 °C
Protection class	IP65

Feature	Value
Ambient temperature	10 ... 50 °C
Product weight	445 g
Linearity	1 %FS
Hysteresis	2.5 %FS
Reproducibility	0.5 %FS
Overall accuracy	2,25 %FS
Temperature coefficient	0.04 %/K
Electrical connection	4-pin M12x1 Plug Round design
Mounting type	with through hole
Pneumatic connection, port 1	G1/8
Pneumatic connection, port 2	G1/8
Materials note	Conforms to RoHS
Material housing	Wrought Aluminium alloy
Material membrane	NBR