

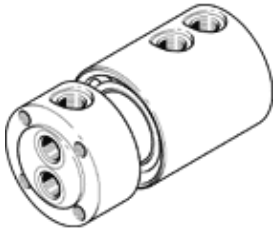
rotary distributor

GF-1/4-2

Part number: 539288

FESTO

Multiple rotary distributor, 2 separate inputs and outputs.



Data sheet

| Feature | Value |
|---|---|
| Nominal size | 8 mm |
| Assembly position | Any |
| Operating pressure for entire temperature range | -0.095 ... 1 MPa |
| Operating pressure complete temperature range | -0.95 ... 10 bar |
| Operating pressure for entire temperature range | -13.775 ... 145 psi |
| Standard nominal flow rate 1.1-2.1 | 1,250 l/min |
| Standard nominal flow rate 1.2-2.2 | 2,020 l/min |
| Max. speed | 300 1/min |
| Operating medium | Compressed air in accordance with ISO8573-1:2010 [7:-:-] Water (liquid, free of ice) |
| Note on operating and pilot medium | Use 5 µm filter when operating with water Lubricated operation possible |
| Corrosion resistance classification CRC | 1 - Low corrosion stress |
| PWIS conformity | VDMA24364-B1/B2-L |
| Ambient temperature | -10 ... 80 °C |
| Pneumatic connection, port 1 | G1/4 |
| Pneumatic connection, port 2 | G1/4 |
| Materials note | Conforms to RoHS |