

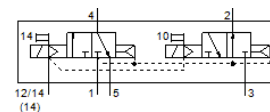
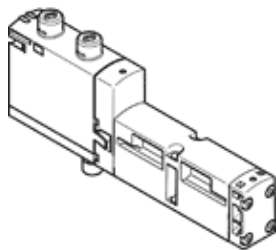
# solenoid valve

## VSVA-B-T32H-AZD-A2-1T1L

Part number: 539180

FESTO

For valve terminals VTSA and VTSA-F.



## Data sheet

| Feature                                                      | Value                                                                       |
|--------------------------------------------------------------|-----------------------------------------------------------------------------|
| Valve function                                               | 2x3/2 open/closed, monostable                                               |
| Type of actuation                                            | electrical                                                                  |
| Width                                                        | 18 mm                                                                       |
| Standard nominal flow rate                                   | 400 l/min                                                                   |
| Operating pressure MPa                                       | 0.3 ... 1 MPa                                                               |
| Operating pressure                                           | 3 ... 10 bar                                                                |
| Design structure                                             | Piston slide                                                                |
| Authorisation                                                | c UL us - Recognized (OL)                                                   |
| Protection class                                             | IP65<br>NEMA 4                                                              |
| Exhaust-air function                                         | throttleable<br>Via throttle plate<br>Via individual sub-base               |
| Sealing principle                                            | soft                                                                        |
| Assembly position                                            | Any                                                                         |
| Manual override                                              | detenting<br>Pushing<br>Covered                                             |
| Type of piloting                                             | Piloted                                                                     |
| Pilot air supply                                             | external<br>Internal                                                        |
| Flow direction                                               | non reversible                                                              |
| Overlap                                                      | Positive overlap                                                            |
| Signal status display                                        | LED                                                                         |
| Pilot pressure MPa                                           | 0.3 ... 1 MPa                                                               |
| Pilot pressure                                               | 3 ... 10 bar                                                                |
| Flow rate of valve                                           | 600 l/min                                                                   |
| Flow rate of valve on individual sub-base                    | 500 l/min                                                                   |
| Optimised flow rate of valve pneumatically concatenated flow | 550 l/min                                                                   |
| Flow rate of pneumatically linked valve                      | 400 l/min                                                                   |
| Switching time off                                           | 30 ms                                                                       |
| Switching time on                                            | 12 ms                                                                       |
| Duty cycle                                                   | 100 %                                                                       |
| Max. positive test pulse with logic 0                        | 1,700 µs                                                                    |
| Max. negative test pulse with logic 1                        | 1,200 µs                                                                    |
| Max. current consumption                                     | 60 mA                                                                       |
| Nominal operating voltage DC                                 | 24 V                                                                        |
| Characteristic coil data                                     | 24 V DC: 1.3 W                                                              |
| Surge strength                                               | 2.5 kV                                                                      |
| Degree of contamination                                      | 3                                                                           |
| Permissible voltage fluctuation                              | +/- 10 %                                                                    |
| Operating medium                                             | Compressed air in accordance with ISO8573-1:2010 [7:4:4]                    |
| Note on operating and pilot medium                           | Lubricated operation possible (subsequently required for further operation) |

| Feature                                 | Value                                                                                          |
|-----------------------------------------|------------------------------------------------------------------------------------------------|
| Vibration resistance                    | Transport application test at severity level 2 in accordance with FN 942017-4 and EN 60068-2-6 |
| Shock resistance                        | Shock test with severity level 2 in accordance with FN 942017-5 and EN 60068-2-27              |
| Corrosion resistance classification CRC | 0 - No corrosion stress                                                                        |
| PWIS conformity                         | VDMA24364-B1/B2-L                                                                              |
| Relative air humidity                   | 0 - 90 %                                                                                       |
| Pilot medium                            | Compressed air in accordance with ISO8573-1:2010 [7:4:4]                                       |
| Ambient temperature                     | -5 ... 50 °C                                                                                   |
| Product weight                          | 190 g                                                                                          |
| Electrical connection                   | Plug-in according to ISO 15407-2                                                               |
| Mounting type                           | On sub-base                                                                                    |
| Auxiliary pilot air port 12/14          | Manifold block, size 18 mm acc. to ISO 15407-2                                                 |
| Pilot exhaust port 82/84                | Optional<br>Not ducted as per standard<br>Ducted                                               |
| Pneumatic connection, port 1            | Manifold block, size 18 mm acc. to ISO 15407-2                                                 |
| Pneumatic connection, port 2            | Manifold block, size 18 mm acc. to ISO 15407-2                                                 |
| Pneumatic connection, port 3            | Manifold block, size 18 mm acc. to ISO 15407-2                                                 |
| Pneumatic connection, port 4            | Manifold block, size 18 mm acc. to ISO 15407-2                                                 |
| Pneumatic connection, port 5            | Manifold block, size 18 mm acc. to ISO 15407-2                                                 |
| Materials note                          | Conforms to RoHS                                                                               |
| Material seals                          | FPM<br>HNBR<br>NBR                                                                             |
| Material housing                        | Aluminium die cast<br>PA                                                                       |
| Material screws                         | Galvanised steel                                                                               |