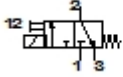


MS6-EE-1/2-V24-S-Z start valve

Feature	Data/description
Exhaust-air function	not throttleable
Type of actuation	electrical
Assembly position	Any
Manual override	resetting detenting
Design structure	Piston slide
Type of reset	mechanical spring
Type of piloting	direct
Pilot air supply	external
Flow direction	non reversible
Valve function	3/2 monostable closed
Switching position indicator	with accessories
Operating pressure	4 - 10 bar
b value	0,4
C value	29 l/sbar
Standard nominal flow rate	7.000 l/min
Characteristic coil data	24V DC
Operating medium	Compressed air
Corrosion resistance classification CRC	2
Ambient temperature	-10 - 60 °C
Product weight	0,816 g
Electrical connection	Plug to DIN 43650 Cubic design



MS6-EE-1/2-V24-S-Z

start valve

Feature	Data/description
	Design C
Mounting type	Optional Line installation with accessories
Pneumatic connection, port 1	G1/2
Pneumatic connection, port 2	G1/2
Pneumatic connection, port 3	G1/2
Materials note	Copper and PTFE-free
Materials information for seals	NBR
Materials information, housing	Aluminium die cast