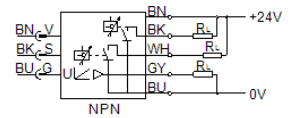


# flow sensor SFEV-F100-L-2NB-K1

Part number: 538548

FESTO

Separate display for SFET-F and SFET-R flow rate transducers



## Data sheet

Feature	Value
Authorisation	RCM Mark
CE mark (see declaration of conformity)	to EU directive for EMC
Materials note	Contains PWIS substances
Ambient temperature	0 ... 50 °C
Switch output	2xNPN
Switching function	Window comparator Threshold value comparator
Switching element function	Normally closed contact Normally open contact
Analogue output	1 - 5 V
Load resistance	50 kOhm
Indicating range	1 ... 10 l/min
Operating voltage range DC	12 ... 24 V
Electrical connection	Cable
Cable length	1 m
Materials information, cable sheaths	PVC
Mounting type	With mounting bracket
Product weight	70 g
Materials information, housing	PA
Type of display	31-place alphanumeric
Protection class	IP40
Corrosion resistance classification CRC	2 - Moderate corrosion stress